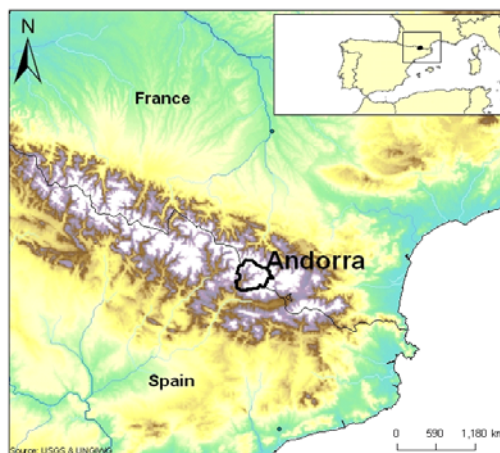




## Andorra

### Air and climate

Emissions of:		Year
SO <sub>2</sub> (1000t)	1.0	1997
SO <sub>2</sub> per capita (kg)	10.0	1997
NO <sub>x</sub> (1000t)	1.0	1997
NO <sub>x</sub> per capita (kg)	11.0	1997
CO <sub>2</sub> (million tonnes)	...	
CO <sub>2</sub> per capita (tonnes)	...	
GHG (million tonnes CO <sub>2</sub> eq.)	...	
GHG per capita (tonnes CO <sub>2</sub> eq.)	...	
Ozone depleting CFCs (ODP tonnes)	...	
GHG from energy (%)	...	



Note: The boundaries, the names shown, and the designations used on this map do not imply official endorsement or acceptance by the United Nations.

### Biodiversity

		Year
Proportion of terrestrial and marine areas protected (%)	7.0	2008
Number of threatened species	9	2008
Fish catch (tonnes)	0	2006
Change in fish catch from previous year (%)	0.0	2006

### Economy

GDP growth rate from previous year (%)	...	
GDP per capita (\$US)	43,504	2007
% Value added agriculture, hunting, forestry, fishing	1	2007
% Value added mining, manufacturing, utilities	4	2007
% Value added other	95	2007

### Energy

Energy consumption (1000t oil eq.)	47	2006
Energy consumption per capita (kg oil eq.)	592	2006
Energy intensity (kg oil eq.) per \$1,000 (PPP) GDP	...	
Renewable electricity production (%)	95.0	2006

### Land and agriculture

Total area (sq km)	468	2007
Agricultural land (sq km)	260	2007
Arable land (% of agric. land)	4.0	2007
Permanent crops (% of agric.land)	...	

		Year
Permanent pasture and meadows (% of agric. land)	96.0	2007
Change in agricultural land area since 1990 (%)	0.0	2007
Forest area (sq km)	160	2007
Change in forest area since 1990 (%)	0.0	2007

### Population

Population (1000)	84	2008
Population growth rate from previous year (%)	1.0	2008

### Waste

Population served by municipal waste collection (%)	100	2007
Municipal waste collected (1000t)	32	2007
Hazardous waste generated (tonnes)	936	2006

### Water and sanitation

Long-term average renewable freshwater resources (mio m <sup>3</sup> /yr)	263	N / A
Urban population with access to improved drinking water source (%)	100	2006
Rural population with access to improved drinking water source (%)	100	2006
Urban population with access to improved sanitation (%)	100	2006
Rural population with access to improved sanitation (%)	100	2006

## Environment Statistics Country Snapshot: Andorra

---

Last updated:

September 2009

These snapshots provide data about the environment and other related statistics at a point in time that will allow comparison between countries. For up to date data, time series, downloadable data, and additional information, please visit original sources. UNSD is not responsible for the quality, completeness / availability, and validity of data obtained from other data providers. Original sources should be cited when snapshots data are referenced. A list of sources and corresponding URLs are shown below.

### Data Sources

#### Food and Agriculture Organization of the United Nations (FAO) Database

*Agricultural land, Arable land, Permanent crops, Permanent pasture and meadows, Change in agricultural land area since 1990, Forest area, Change in forest area since 1990, and some of Long-term average renewable freshwater resources data are extracted from FAO.*

FAOSTAT: <http://faostat.fao.org/>

AQUASTAT: <http://www.fao.org/nr/water/aquastat/dbase/index.stm>

#### International Union for Conservation of Nature and Natural Resources (IUCN)

*Number of threatened species data are extracted from the IUCN.*

<http://www.iucnredlist.org/>

#### UNdata

*Fish catch, Change in fish catch from previous year, Energy intensity (kg oil eq.) per \$1,000 (PPP) GDP, GDP growth rate from previous year, and GDP per capita at current prices data are retrieved from the UNdata portal. UNdata was launched by the United Nations Statistics Division (UNSD) of the Department of Economic and Social Affairs (DESA). It brings the various UN statistical databases within easy reach of users through a single entry point. Users can search and download a variety of statistical resources provided by the UN System.*

<http://data.un.org/>

#### United Nations, Department of Economic and Social Affairs, Population Division, World Population Prospects

All 'per capita' variables use population data figures obtained from this source. *Population and Percentage of population growth rate from previous year data are also retrieved from this source.*

<http://www.un.org/esa/population/>

#### United Nations Framework Convention on Climate Change (UNFCCC) Secretariat

*SO<sub>2</sub> emissions, SO<sub>2</sub> per capita emissions, NO<sub>x</sub> emissions, NO<sub>x</sub> per capita emissions, GHG emissions, GHG per capita, and Percentage of GHG from energy data are obtained from the UNFCCC Greenhouse Gas Emissions Database.*

[http://unfccc.int/ghg\\_emissions\\_data/items/3800.php](http://unfccc.int/ghg_emissions_data/items/3800.php)

#### United Nations Statistics Division (UNSD) Demographic Statistics Yearbook

*Total area data are extracted from this source.*

<http://unstats.un.org/unsd/demographic/products/dyb/default.htm>

#### United Nations Statistics Division (UNSD) Energy Statistics Database

*Energy consumption, Energy consumption per capita, and Renewable electricity production figures are extracted from the UNSD Energy Statistics Database.*

<http://unstats.un.org/unsd/energy/default.htm>

#### United Nations Statistics Division (UNSD) Environment Statistics Database

*Population served by municipal waste collection, Municipal waste collected, Hazardous waste generated, some of Long-term average renewable freshwater resources, and some of the air emissions data are extracted from the UNSD Environment Statistics Database (note: database also includes data from OECD, and Eurostat).*

<http://unstats.un.org/unsd/environment/qindicators.htm>

#### United Nations Statistics Division (UNSD) Millennium Development Goals (MDG) Indicator Database

*Proportion of terrestrial and marine areas protected, CO<sub>2</sub> emissions, CO<sub>2</sub> emissions per capita, Ozone-depleting CFCs, Urban population with access to improved drinking water source, Rural population with access to improved drinking water source, Urban population with access to improved sanitation, and Rural population with access to improved sanitation data are extracted from MDG database.*

<http://mdgs.un.org/unsd/mdg/Data.aspx>

#### United Nations Statistics Division (UNSD) National Accounts Database

*% value added agriculture, hunting, forestry, fishing; % value added mining, manufacturing, utilities; and % value added other data are obtained from the National Accounts Main Aggregates Database.*

<http://unstats.un.org/unsd/snaama/introduction.asp>

### Footnotes for previous page

\* Any footnotes displayed below are relevant to UNSD Environment and Energy Statistics variables only. For further information on data retrieved from other sources, please visit the original data provider.