



JAPAN



Statistics at METI

Our Mission

We, Research and Statistics Department, provide reliable economic industrial statistics to grasp economic trends quickly and accurately.

In order to respond to every aspect of Japan's economy and to strategically rebuild the systems and mechanisms related to the economy and industry for the future of Japan, it is indispensable to have a proper understanding of economic trends.

We conduct economic statistical surveys in a wide range of sectors, including mining, manufacturing, wholesale and retail trade, and selected services, and analyze these survey data to have a proper understanding of economic trends.

These economic statistical data and their analyses are widely utilized as the basis for METI's policies and also as a mirror that reflects the recent rapid changes in economic structure.

Introduction of Main Statistics at METI

Statistics and Analysis indexed and processed based on first-order statistics

Indices of Industrial Production (IIP)

Economic Analysis Office

<http://www.meti.go.jp/english/statistics/tyo/iip/index.html>

These indices are intended to comprehensively grasp the statuses of production, shipment, and inventory of our country's manufacturing and mining industries and are published every month. The source data are mainly based on the "Current Survey of Production" conducted by METI.

What are the features of these data?

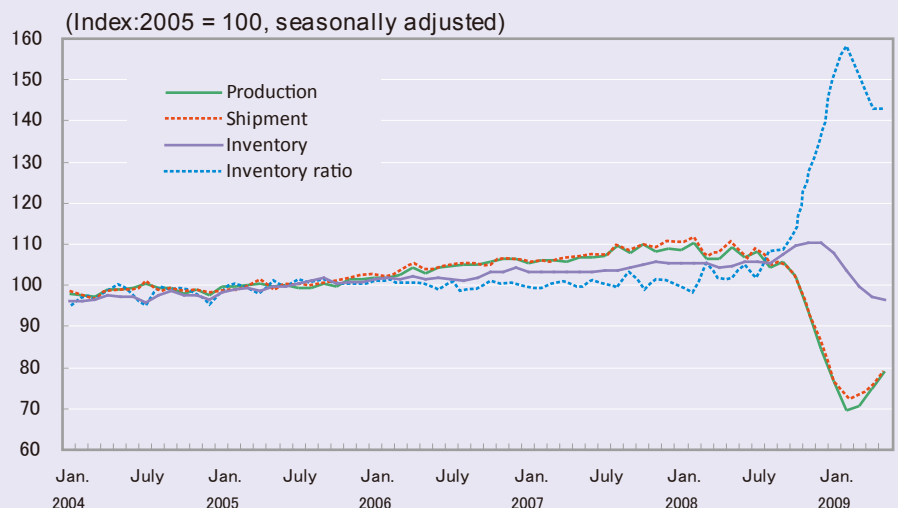
The indices enable us to perceive production activities of business establishments in the mining and manufacturing industries, supply and demand trends of produced products, production plans of manufacturers for two months ahead, and production-related facilities and their operational statuses.

What are they used for?

Since indices of industrial production are published earlier than other business indices and have high economic sensitivity, they attract great interest.

In addition to classification by business types, the indices are also classified by goods from the viewpoint of economic use of products. Therefore, these indices are widely used to grasp production trends.

Changes in Indices of Industrial Production (IIP)



Indices of Tertiary Industry Activity

Economic Analysis Office

<http://www.meti.go.jp/english/statistics/tyo/sanzi/index.html>

These indices are intended to comprehensively grasp the production activity statuses of businesses falling under the tertiary industry sector (e.g., wholesalers, retailers, and information and communications businesses) and are published every month.

For the general indices, groups representing production activities of services of individual business types are weight-averaged by weight of added value in the base year.

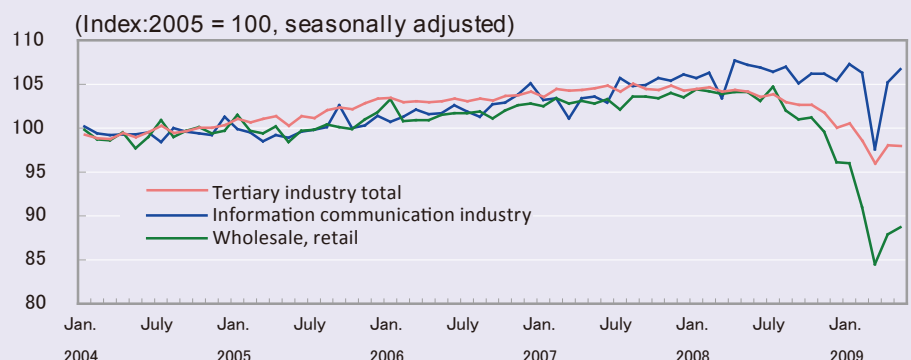
What are the features of these data?

The indices enable us to see the activities of the tertiary industry by business types in a unified scale.

What are they used for?

These indices are used together with IIPs in Monthly Economic Reports published by the Cabinet Office and adopted as Indexes of Business Conditions. Thus, they are widely recognized as an index for grasping economic trends.

Indices of Tertiary Industry Activity: Changes in Major Businesses



Indices of All Industry Activity

<http://www.meti.go.jp/english/statistics/tyo/zenkatu/index.html>

Economic Analysis Office

These indices are intended to grasp the production activities of all industries and also called "GDP as viewed from the supply side." They are obtained by weight-averaging the "Indices of Agriculture, Forestry and Fishery Production," "Indices of Construction Industry Activity," "Indices of Industrial Production," "Indices of Tertiary Industry Activity," and "Indices of Government Services etc." with the added value weight of the base year and published every month.

What are the features of these data?

The indices enable us to grasp domestic economic trends in a short term since the Indices of All Industry Activity are published monthly, as opposed to GDP (gross domestic product) reports, which are published every quarter.

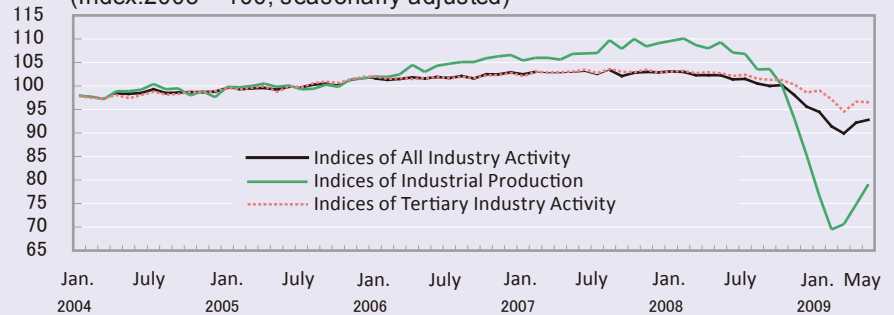
In addition, the Indices of All Industry Supply, which represent the trends of the final demand components, are also published.

What are they used for?

They are widely used as base data that indicate changes in industrial activities in a short term.

Indices of All Industry Activity: Changes in Major Business

(Index:2005 = 100, seasonally adjusted)



Input-Output Table

<http://www.meti.go.jp/english/statistics/tyo/kokusio/index.html>

Economic Analysis Office

Input-output tables are comprehensively processed statistics that indicate the connection between industries, concerning transactions of all goods and services produced or sold in one year in specific countries/regions, in the form of tables. These tables include "basic tables" prepared in cooperation between 10 prefectural ministries every 5 years, "updated input-output tables", which complement the missing data in the 5-year period, regional tables, and Japan-US tables.

structure of the economy, an added value and the demand structure, and calculating factors such as the repercussion effect of an economic forecast or a certain economic policy on the economy.

What are the features of these data?

The vertical axis of the table on the left represents "cost components of products such as the amount of raw material input for its production," while the horizontal axis represents "sales destination of the product."

In addition, you can identify the repercussion effect of demand on production such as "how much production will be induced directly/indirectly in each industry if one unit of demand in a certain industry is generated" by creating a coefficient based on the table.

What are they used for?

These tables are widely used in grasping the production structure of the economy, an added value and the demand structure, and calculating factors such as the repercussion effect of an economic forecast or a certain economic policy on the economy.

Model Form of Input-Output Table (Basic Input-Output Table) for Fiscal 2005 (3-Component Table)

(Unit: trillion yen)

Demand component \ Supply component	Primary industry	Secondary industry	Tertiary industry	Domestic final demand	Exports	Imports	Domestic production value
Primary industry	2	8	1	4	0	-2	13
Secondary industry	3	175	58	156	56	-59	388
Tertiary industry	2	75	143	344	17	-11	570
Gross added value	7	130	369				
Domestic production value	13	388	570				

Note: A blue arrow labeled "Sales destination of merchandise" points from the Secondary and Tertiary industry columns to the Domestic production value column. A green arrow labeled "Cost composition of merchandise" points from the Domestic production value row to the Primary, Secondary, and Tertiary industry rows.

Analysis of All Industrial Activities

<http://www.meti.go.jp/english/statistics/bunseki/index.html>

Economic Analysis Office

This is a periodical that mainly contains analysis of short-term economic activities in the manufacturing and tertiary industries of Japan and is published every quarter. It is published in the first ten days of June, September, December, and March. In the March issue, an "Review of the year," which summarizes the trends in the previous year, is published.

What are the features of these data?

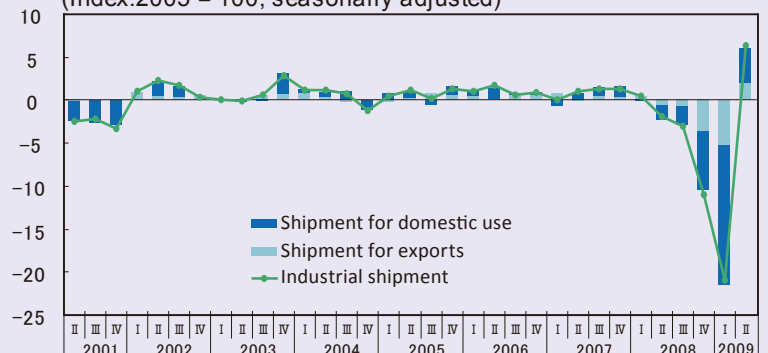
It not only analyzes the supply trends and characteristics by industries and business types but also the final demand trends as viewed from the supply side.

What are they used for?

The analysis result is used as base data of a trade policy and a policy for small and medium enterprises by creating export ratios such as industrial shipments by domestic/export uses and the gross domestic supply by domestically-produced and imported products, and indices such as import penetration ratio and by providing analysis of the backgrounds and the cause.

Changes in contribution ratio of industrial shipment by domestic/foreign demand from the previous term

(Index:2005 = 100, seasonally adjusted)



Census of Manufactures (Fundamental Statistical Surveys)

<http://www.meti.go.jp/english/statistics/tyo/kougyo/index.html>

This census is conducted every year among factories (manufacturing establishments) across the nation in order to clarify the actual status of manufacturing businesses. In a year when an economic census activity survey is conducted, this census is conducted among all factories covered by the economic census. In other years, this census is conducted among factories with four or more employees.

What are the features of these data?

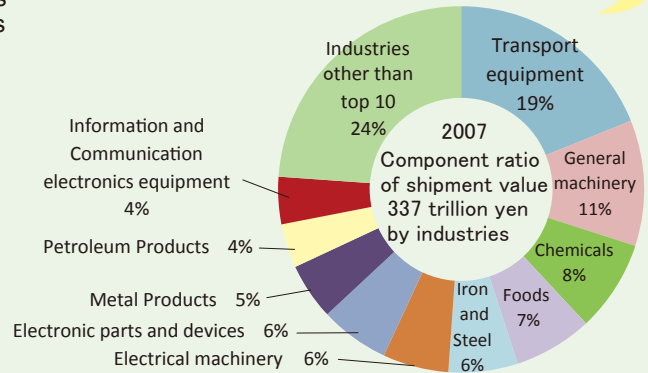
This census enables you to know the number of factories across the nation, number of their employees, shipped amount of manufactured goods, consumed amount of industrial water, etc. by industry, scale and region.

What are they used for?

The census result is widely used as base data of policies for supporting management of manufacturing businesses, plans for developing industrial parks, and policies for attracting enterprises, and as base data of policies for promoting small and medium enterprises.

Industrial Statistics Office

In terms of industrial shipment value of Japan in fiscal 2007 (4 or more employees), transport machinery represented the largest value, followed by general machinery, chemical and food. The top five industry sectors accounted for more than 50%.



Census of Commerce (Fundamental Statistical Surveys)

<http://www.meti.go.jp/english/statistics/tyo/syougyo/index.html>

This census is conducted among stores (business establishments, including wholesalers and retailers) across the nation in order to clarify the actual status of commerce. Currently, the census is conducted every five years (simplified survey is conducted in the intermediate year). In a year when Economic Census for Business Activity is conducted, this census is conducted among all stores covered by the economic census.

What are the features of these data?

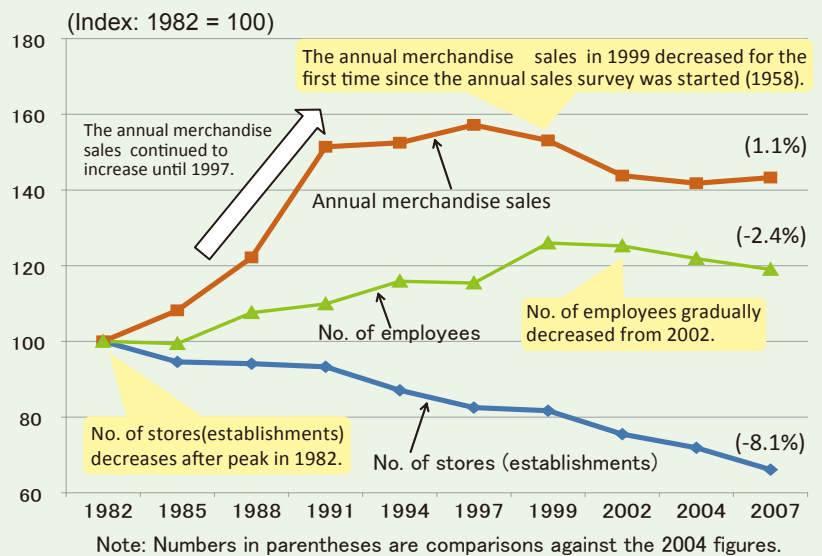
This census enables you to know the number of stores across the nation, the number of their employees, the sales of merchandise, etc. by industry, scale and region. In addition, it shows mechanisms of distribution of merchandise and the location conditions of stores.

What are they used for?

This census result is widely used as base data for formulating policies for revitalizing shopping districts in urban areas, policies for promoting small- to medium-scale stores, and policies for making physical distribution efficient.

Industrial Statistics Office

Changes in retailers



Survey of Selected Service Industries (Fundamental Statistical Surveys) Service Industry Statistics Office

<http://www.meti.go.jp/english/statistics/tyo/tokusabizi/index.html>

This survey is conducted every year to clarify the activities of those types of service businesses of large economic scale and those types deeply involved in people's lives among service businesses that METI mainly supervises.

What are the features of these data?

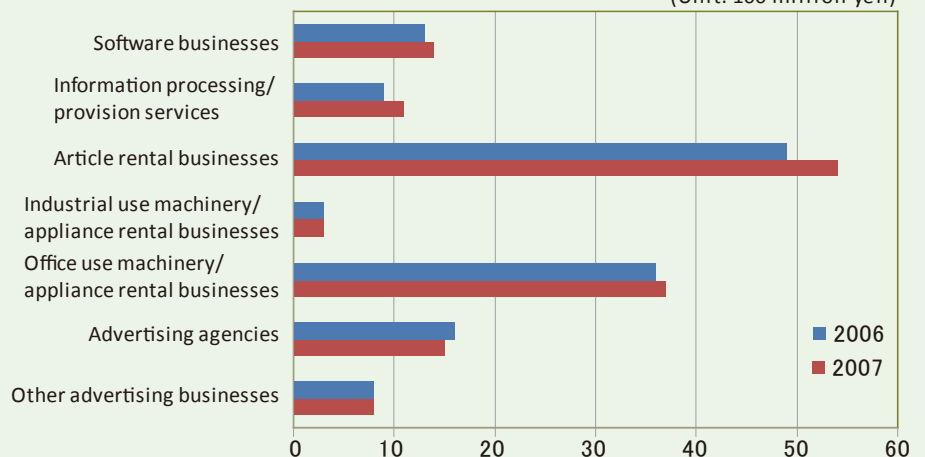
The survey enables you to know the number of business establishments, number of their employees, sales status of industries to which they provide services, etc. for selected service industries by scale and region.

What are they used for?

The survey result is widely used as base data of policies for promoting service industries, policies for appropriate conduct of transactions, etc.

Annual sales per establishment

(Unit: 100 million yen)



Current Statistics

Statistics for understanding short-term trend of the major sectors

Current Survey of Production (Fundamental Statistical Surveys)

<http://www.meti.go.jp/english/statistics/tyo/seidou/index.html>

Office of Current Survey for Mining and Manufacturing

With the aim of obtaining base data of administrative policies for the mining and manufacturing industries by clarifying the monthly dynamic state of mining and manufacturing production commodities, a survey on domestic production trends is conducted every month among establishments with over certain numbers of employees designed by business types in advance.

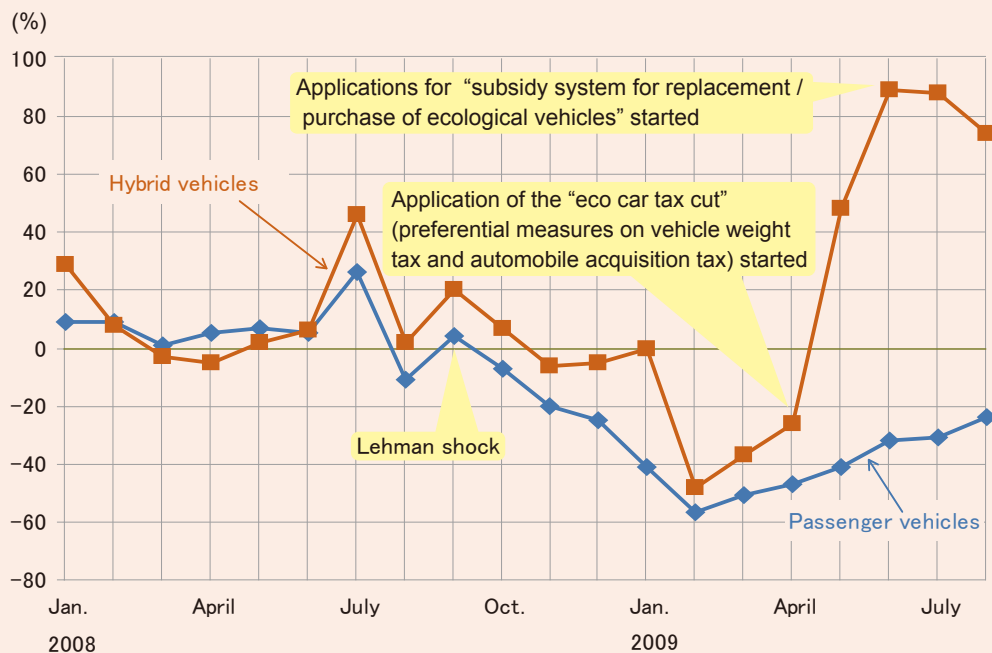
What are the features of these data?

The survey enables you to know the monthly changes in production, shipment and inventory volumes and values of approximately 1,800 mining and manufacturing products for each item.

What are they used for?

The survey result is widely used as base data for assessing business conditions of individual business industries and grasping the supply and demand trends in the administration and industries. It is also widely used as base data for creating Indices of Industrial Production, Estimates of GDP (Cabinet Office), Input-Output Tables, etc.

Changes in passenger vehicles and hybrid vehicles productions from the same month of the previous year



Current Survey of Commerce (Fundamental Statistical Surveys)

http://www.meti.go.jp/english/statistics/tyo/syoudou_kakuho/index.html

Industrial Statistics Office

This survey is conducted every month in order to clarify the trends in selling activities of commercial business establishments.

It is a sampling survey with the Census of Commerce being the population, and the survey subjects consist of four groups: large-scale wholesalers, large-scale retailers, convenience stores, and general business establishments.

What are the features of these data?

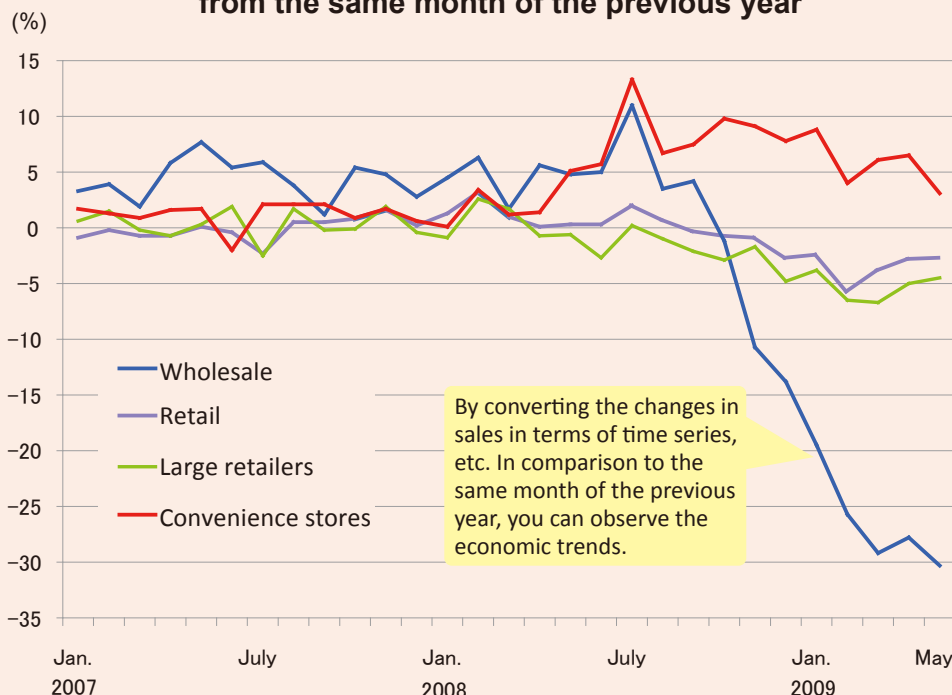
It is the only statistical survey that on a monthly basis grasps the consumption trends from the viewpoint of selling activities for "goods."

What are they used for?

The retail sales value is used as information on the selling side when viewing the supply and demand trends of personal spending in Monthly Economic Reports (Cabinet Office).

The survey result is used as an indicator of Indexes Business Conditions (diffusion index (DI) or composite index (CI)), which are used to assess the economic trends.

Changes in the sales value from the same month of the previous year



Current Survey of Selected Service Industries (General Statistical Surveys)

<http://www.meti.go.jp/english/statistics/tyo/tokusabizi/index.html>

Service Industry Statistics Office

This survey is conducted every month in order to clarify the activities of those types of service businesses of large economic scale and those types deeply involved in people's life among service businesses that METI mainly supervises.

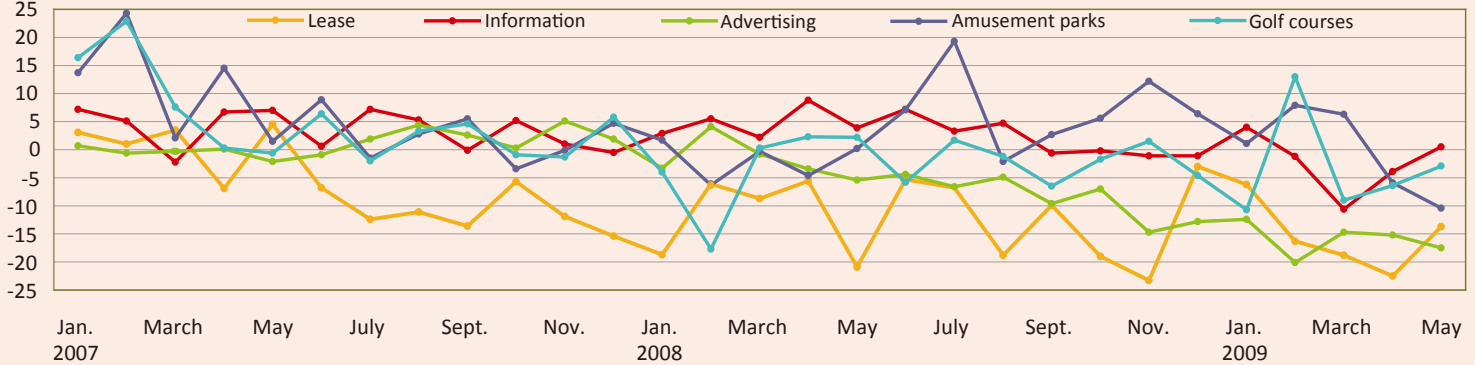
What are the features of these data?

It is the only statistical survey that on a monthly basis that grasps the sales trends in selected service industries.

What are they used for?

The survey result is widely used as base data of Estimates of GDP and Monthly Economic Reports, base data for economic views of individual businesses and for the sound development of service industries, etc.

Changes in sales of major businesses (change from the same month in the previous year)



Survey on Petroleum Consumption by Selected Industries (Fundamental Statistical Surveys)

Office of Current Survey for Mining and Manufacturing

This survey is conducted every month in order to obtain base data of policies related to the consumption of energy sources such as petroleum, by clarifying the trends in consumption of petroleum, etc. in selected manufacturing industries (nine industries: pulp/paper/paperboards; chemicals; chemical fibers; petroleum products; ceramic, clay and stone products; glass products; iron and steel; non-ferrous metals; and machinery) by business and fuel type.

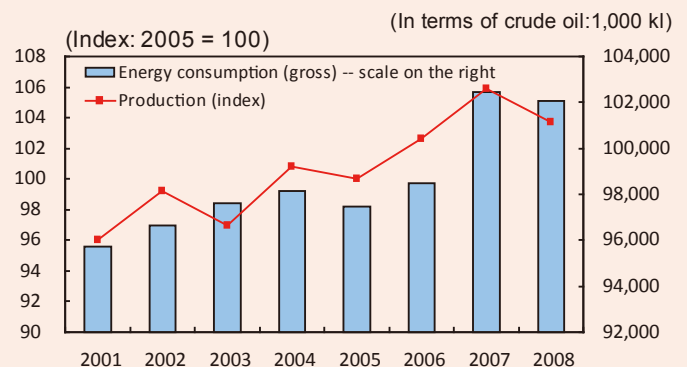
What are the features of these data?

The survey enables you to know the trends in monthly consumptions of petroleum and non-petroleum energy sources by business and fuel type.

What are they used for?

The survey result is widely used as base data involved in grasping the actual status of petroleum consumption in the manufacturing industry, and evaluating/reviewing the petroleum supply plan and the forecast of demand for petroleum products, the "Outline for Promotion Effects to Prevent Global Warming," etc.

Changes in production and energy consumption in the Iron and steel industry



Enterprise Statistics

Statistics for understanding the overall picture of corporate activities and overseas activities

Survey of Trends in Business Activities of Foreign affiliates (General Statistical Surveys)

<http://www.meti.go.jp/english/statistics/tyo/gaisikei/index.html>

Enterprise Statistics Office

This survey is conducted every year among all types of businesses with a ratio of investment by foreign investors exceeding 1/3, excluding financial/insurance businesses and real estate businesses, in order to grasp the actual state of the business activities of foreign affiliates in Japan.

What are the features of these data?

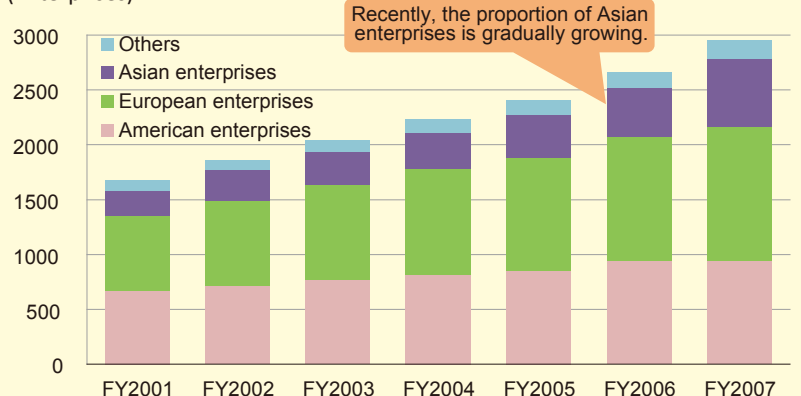
This survey enables you to know: the state of distribution of foreign affiliates by home nationalities and by types of businesses; the state of business activities (e.g., employment, sales, exports/imports, profits, payment to the largest investor in the country); etc.

What are they used for?

The survey result is used as base data of administrative policies and trade policies such as for promotion of investments in Japan.

Composition of foreign affiliates by home nationality

(Enterprises)



Recently, the proportion of Asian enterprises is gradually growing.

Basic Survey of Japanese Business Structure and Activities (Fundamental Statistical Surveys)

<http://www.meti.go.jp/english/statistics/tyo/kikatu/index.html>

Enterprise Statistics Office

This survey is conducted every year among manufacturers, wholesalers, retailers, electricity/gas businesses, credit card businesses, installment finance businesses, information and communications businesses, service businesses, etc. with 50 or more employees and capitals (investment in capital) of 30 million yen or more, in order to comprehensively grasp the actual status of various activities such as diversification, internationalization, and degree of software introduction of business activities of enterprises in Japan.

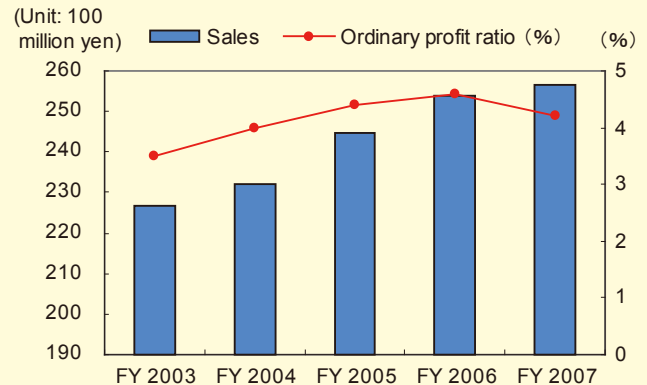
What are the features of these data?

Trends in business activities of medium- to large-scale enterprises: The survey enables you to know: the state of business organizations; the state of business deployment; the state of earnings, assets/debts and capitals; the state of business deployment by subsidiaries; the state of research and development costs; the state of ownership/use of intellectual property rights; the state of outsourcing; etc.

What are they used for?

The survey result is used as base data for use in the White Paper on International Economy and Trade and the White Paper on Small and Medium Enterprises in Japan, analysis of the industrial structure, corporate behavior, etc. and for policies for small and medium enterprises.

Changes in sales and ordinary profit ratio per enterprise



Basic (Trend) Survey of Overseas Business Activities (General Statistical Surveys)

<http://www.meti.go.jp/english/statistics/tyo/kaigaizi/index.html>

Enterprise Statistics Office

This survey is conducted every year among overseas subsidiaries with ratio of investment by Japanese enterprises being 10% or higher and second-generation subsidiaries with ratio of investment by subsidiaries with over 50% investment exceeding 50%, in order to grasp the actual state of overseas business activities of Japanese enterprises.

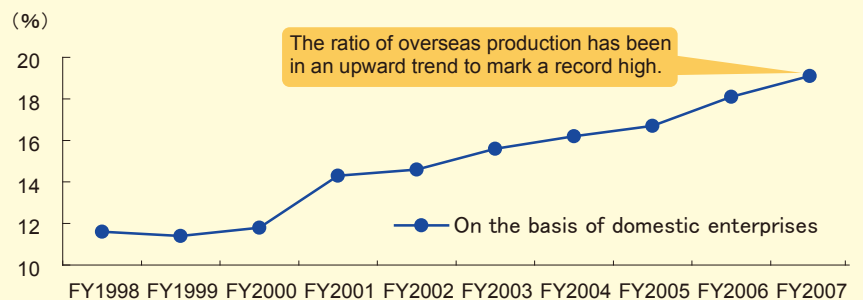
What are the features of these data?

This survey enables you to know: the state of overseas deployment of Japanese enterprises (state of deployment by regions, state of withdrawal, etc.); the state of business activities overseas (sales, overseas production ratio, appropriation of earnings, etc. and capital investment, employment, corporate strategy, etc.); sales and procurement activities, transactions with Japan by local offices; etc.

What are they used for?

The survey result is widely used as base data for use in the White Paper on International Economy and Trade, the White Paper on the Monodzukuri Base, etc. and policies for facilitating business activities overseas, etc.

Changes in overseas production ratio of Japan (manufacturing industry)



Note: ratio of overseas production on the basis of all domestic corporations = sales of local affiliates (manufacturers) / (sales of local affiliates [manufacturers] + sales of domestic corporations [manufacturers]) × 100.0

Quarterly Survey of Overseas Subsidiaries (General Statistical Surveys) Enterprise Statistics Office

<http://www.meti.go.jp/english/statistics/tyo/genjihou/index.html>

This survey is conducted every quarter in order to grasp the trends in business activities of Japanese enterprises outside Japan in a short span. It is conducted among overseas local offices (manufacturing industries) with 50 or more employees in which Japanese enterprises with 100 million or more yen capital and 50 or more employees acquire an stake over 50%.

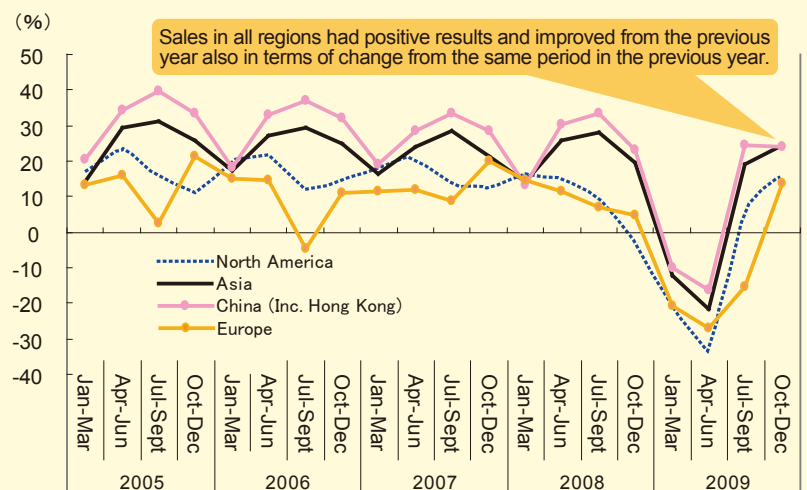
What are the features of these data?

This survey enables you to know: actual results (value) and forecasts (DI) of sales of overseas local office; actual results (value) and forecasts (DI) of capital investment; actual results (people) and forecasts (DI) of number of employees; etc.

What are they used for?

Making use of its mobility as published every quarter, the survey result is used as base data of policies for administrative policies such as policies for industries, policies for trade, and policies for small and medium enterprises.

Sales next DI (by region)



Statistical System of Japan

Central Government

Cabinet Office [National Accounts, etc.]

Ministry of Internal Affairs and Communications [Population Census, etc.]
*Director-General for Policy Planning(Statistical Standard)

Ministry of Justice [Statistical Survey on Registration, etc.]

Ministry of Finance [Financial Statements Statistics of Corporations by Industry, etc.]

Ministry of Education, Culture, Sports, Science and Technology [School Basic Survey, etc.]

Ministry of Health, Labour and Welfare [Vital Statistics, etc.]

Ministry of Agriculture, Forestry and Fisheries [Census of Agriculture and Forestry, etc.]

Ministry of Economy, Trade and Industry [Census of Manufactures, Census of commerce, etc.]

Ministry of Land, Infrastructure, Transport and Tourism [Statistics on Construction and Transportation, etc.]

Ministry of the Environment [General Survey of the Air Pollutants, etc.]

METI's Statistical System

Field of survey		Manufacturing	Commerce	Services
First-order Statistics	Structural Statistics Basic statistics for understanding industrial structure	Census of Manufactures (Every year)	Census of Commerce (Main survey: Once every 5 years Simplified survey: Midway)	Survey of Selected Service Industries (Every year)
	Current Statistics Statistics for understanding short-term trend of the major sectors	Current Survey of Production (Every month) Survey on Petroleum Consumption by Selected Industries (Every month)	Current Survey of Commerce (Every month)	Current Survey of Selected Service Industries (Every month)
	Enterprise Statistics Statistics for understanding the overall picture of corporate activities and overseas activities	Basic Survey of Japanese Business Structure and Activities (Every year) Survey of Trends in Business Activities of Foreign affiliates (Every year) Basic (Trend) Survey of Overseas Business Activities (Every year) Quarterly Survey of Overseas Subsidiaries (Quarterly)		
Processed statistics (Second-order Statistics) Statistics indexed and processed based on first-order statistics		Indices of Industrial Production (IIP) (Every month)	Indices of Tertiary Industry Activity (Every month)	
		Indices of All Industrial Activity (Every month) Input-Output Table (Including basic tables prepared in cooperation between 10 prefectural ministries every 5 years and updated input-output tables prepared by METI every year)		
Analysis		Analysis of All Industrial Activities (Quarterly)		

Public Relations and International Affairs Office, Research and Statistics Department Economic and Industrial Policy Bureau,
Ministry of Economy, Trade and Industry(METI), Japan
1-3-1, Kasumigaseki, Chiyoda-ku, Tokyo 100-8902, JAPAN Phone : +81-3-3501-6624 Fax : +81-3-3501-7769
Email : qqcebb@meti.go.jp <http://www.meti.go.jp/english/statistics/index.html>

March, 2010

Recyclable to paper

