

**DATA DISSEMINATION STRATEGIES IN MALAYSIA**

Department of Statistics, Malaysia

---

---

---

---

---

---

---

---

**Outline of Presentation**

- Data Dissemination Mode
- Data Dissemination Strategies in ICT Strategic Plan (ISP)
- Databases
- Assessing Customer Needs
- Issues and Challenges

---

---

---

---

---

---

---

---

**Data Dissemination**

Publication      Web site

BERNAMA

Unpublished Data      Press Conference      SDDS

---

---

---

---

---

---

---

---

## Publications

- CDs, books, bulletin, pamphlet published by the Department
- Frequency : yearly, monthly, quarterly and half yearly




---

---

---

---

---

---

---

---

## Unpublished Data

- Data that has to be extracted but not found in any of the Department's publication.
- Requested data includes tabulation, survey questionnaires, enumeration block map and others

---

---

---

---

---

---

---

---

## Special Data Dissemination Standards (SDDS)

Category of Data	Periodicity		Timeliness	
	IMF	DOSM	IMF	DOSM
Index of Industrial Production	Monthly	Monthly	6 weeks	5 weeks
Salaries/Wages (Manufacturing)	Quarterly	Monthly	12 weeks	7 weeks
Consumer Price Index (CPI)	Monthly	Monthly	4 weeks	2 weeks
Producer Price Index	Monthly	Monthly	4 weeks	4 weeks
External Trade	Monthly	Monthly	8 weeks	4 weeks
National Accounts	Quarterly	Quarterly	12 weeks	8 weeks
Employment/Unemployment	Quarterly	Quarterly	12 weeks	8 weeks

---

---

---

---

---

---

---

---

## Advance Release Calendar - ARC

[www.statistics.gov/english/frameset\\_calendars.ghp?file=advcal](http://www.statistics.gov/english/frameset_calendars.ghp?file=advcal)

Indicator	Release Date	Time	Frequency	Previous Release Date	Next Release Date	Time
GDP (QoQ)	15 Oct 2009	10:30 AM	Quarterly	15 Jul 2009	15 Nov 2009	10:30 AM
GDP (YoY)	15 Oct 2009	10:30 AM	Annual	15 Oct 2008	15 Oct 2010	10:30 AM
Manufacturing (QoQ)	15 Oct 2009	10:30 AM	Quarterly	15 Jul 2009	15 Nov 2009	10:30 AM
Manufacturing (YoY)	15 Oct 2009	10:30 AM	Annual	15 Oct 2008	15 Oct 2010	10:30 AM
Services (QoQ)	15 Oct 2009	10:30 AM	Quarterly	15 Jul 2009	15 Nov 2009	10:30 AM
Services (YoY)	15 Oct 2009	10:30 AM	Annual	15 Oct 2008	15 Oct 2010	10:30 AM
Construction (QoQ)	15 Oct 2009	10:30 AM	Quarterly	15 Jul 2009	15 Nov 2009	10:30 AM
Construction (YoY)	15 Oct 2009	10:30 AM	Annual	15 Oct 2008	15 Oct 2010	10:30 AM

---

---

---

---

---

---

---

---

---

---

## Website [www.statistics.gov.my](http://www.statistics.gov.my)



---

---

---

---

---

---

---

---

---

---

## Contents of Website [www.statistics.gov.my](http://www.statistics.gov.my)

- ✓ Profile
- ✓ Organisation
- ✓ Activity
- ✓ Product and Services
- ✓ Current Surveys
- ✓ List of Publications
- ✓ Synopsis of Publications
- ✓ Latest Releases
- ✓ Online Order Form
- ✓ Key Data
- ✓ Link to SDSS
- ✓ BERNAMA Infolink
- ✓ Calendar of Events

---

---

---

---

---

---

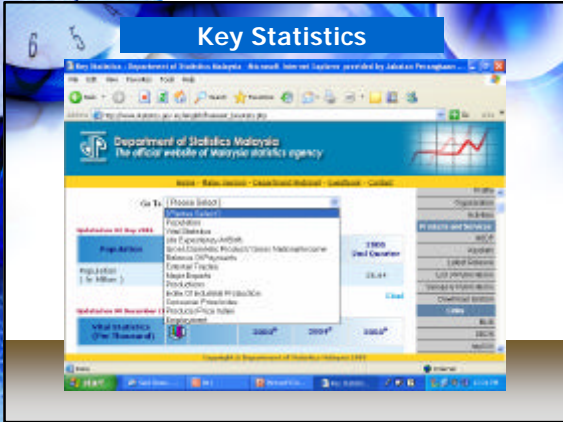
---

---

---

---

## Key Statistics



---

---

---

---

---

---

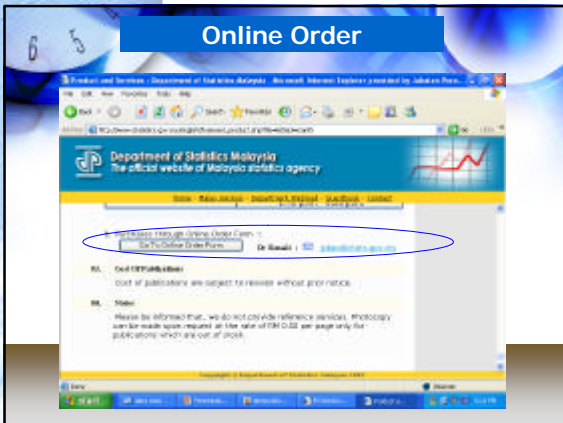
---

---

---

---

## Online Order



---

---

---

---

---

---

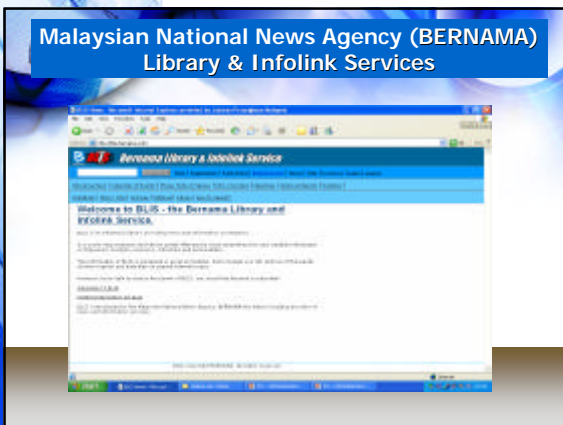
---

---

---

---

## Malaysian National News Agency (BERNAMA) Library & Infolink Services



---

---

---

---

---

---

---

---

---

---

## Malaysian National News Agency (BERNAMA) Library & Infolink Services

Data files provided to BERNAMA

1. Consumer Price Index (CPI)
2. Summary of Trade data
3. Malaysian Economy in Brief
4. Index of Industrial Production
5. Monthly Statistical Bulletin

## InfoCEN



## InfoCEN

The screenshot shows the InfoCEN software interface displaying a detailed data table. The table has columns for 'Miles', 'Population', 'GDP', and 'GDP per capita'. The data is organized into rows for different locations, including 'Miles', 'Population', 'GDP', and 'GDP per capita'. The table also includes a 'Totals' row at the bottom.

	Miles	Population	GDP	GDP per capita	Totals
Miles	1000	1000	1000	1000	
Population	1000	1000	1000	1000	
GDP	1000	1000	1000	1000	
GDP per capita	1000	1000	1000	1000	
Totals	1000	1000	1000	1000	

## InfoCEN

### Advantages :

- ✓ Easy access
- ✓ Timely information

### Users :

- ✓ Economic Planning Unit (EPU)  
Formulating plans for national development and administration
- ✓ Corporate & User Services Division, DOSM  
Data requests

---

---

---

---

---

---

---

---

## Microdata Dissemination

- ✓ 2 per cent sample of the Population and Housing Census data provided to Integrated Public Use Microdata Series (IPUMS), USA and other users
- ✓ 30 per cent sample of the Household Expenditure Survey data provided to higher learning institutions for research purposes

---

---

---

---

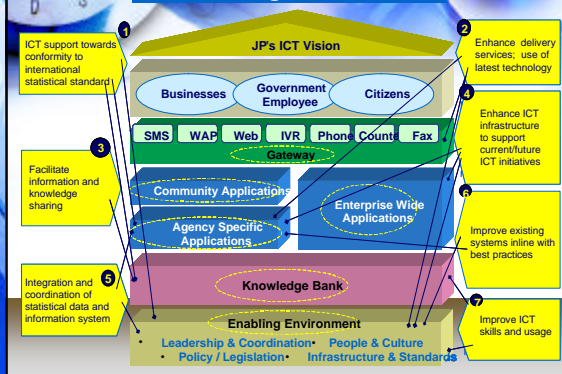
---

---

---

---

## ICT Strategic Plan (ISP)



---

---

---

---

---

---

---

---

## ICT Strategic Plan (ISP)

### Alternative Integrated Statistical Systems Framework



---

---

---

---

---

---

---

---

## DOSM Data Warehouse

- ✓ Small and Medium Enterprise (SME) Database
- ✓ Agriculture Sector Database
- ✓ External Trade Database

---

---

---

---

---

---

---

---

## National SME Database

AUG 2004 : National SME Development Council chaired by The Prime Minister decided SME Database be developed and hosted by DOSM.

- 1. Establishment Database**
  - Source : SME Baseline Census 2005
  - 548,267 records
  - Application of Data Mining Tools
- 2. Aggregate Database**
  - Aggregated tables
  - 10 main agencies (Phase 1 : BNM, MITI, KWSP, SMIDEC, LHDN, SSM, NPC, MECD, MDeC & MATRADE)

---

---

---

---

---

---

---

---

### National SME Database

**3. Establishment Profile**

- Basic profile (Name, Address, Main activity, Industry classification and size (micro, small, medium))
- Tracking system

**4. Metadata**

- Concepts, definitions and technical information

---

---

---

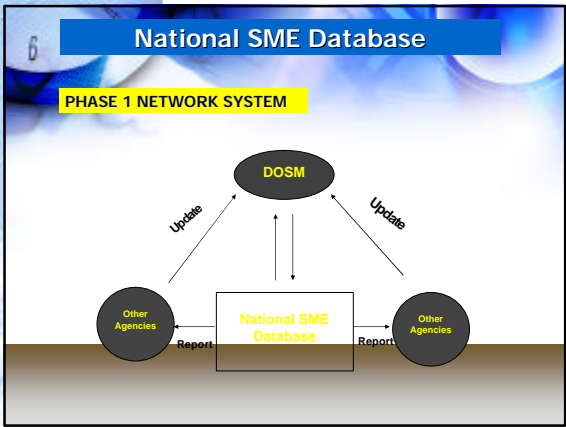
---

---

---

---

---




---

---

---

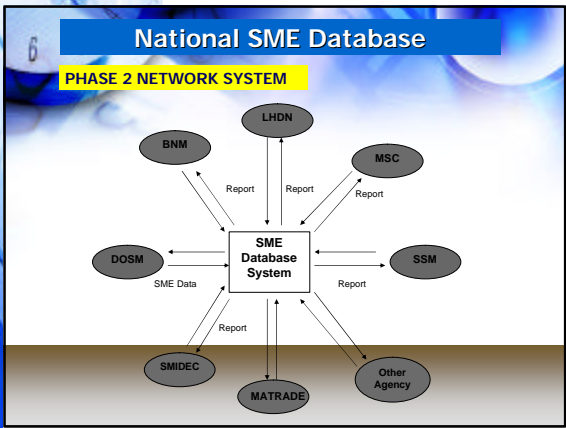
---

---

---

---

---




---

---

---

---

---

---

---

---



## Agriculture Sector Database

- ✓ The development of Agriculture Sector Database will be carried out in phases:

Phase 1 : 2006

Current data from Agriculture Census 2005 are being imputed

Phase 2 : 2007 onwards

Database will be integrated with data collected from agriculture agencies

---

---

---

---

---

---

---

---

## Data Warehouse

### SPEEDMINER

- ✓ Software used in the development of SME, Agriculture and External Trade Database
- ✓ Multi-dimension database
- ✓ Do not need to create a cube (Creating cube is time consuming)
- ✓ Easy to implement
- ✓ Can handle terabytes of data
- ✓ Web capability
- ✓ No limit of drill down

---

---

---

---

---

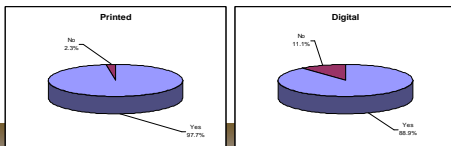
---

---

---

## Customer Satisfaction Survey

- ✓ 474 respondents (mailing list / subscribers)
- ✓ Findings :



---

---

---

---

---

---

---

---

6

### DOSM Strengthening Plan

- ✓ Prioritize data needs and usage of administrative data
- ✓ Develop central database
- ✓ Develop metadata repository
- ✓ Develop common national business registries
- ✓ Establish IATC (Inter-Agency Technical Committee)
  - standardization and harmonization
  - facilitate data sharing with other government agencies

---

---

---

---

---

---

---

---

6

### Issues and Challenges

- ✓ Knowing Target Audiences
- ✓ Technical & Methodology Development
- ✓ Ethics, Transparency and Confidentiality

---

---

---

---

---

---

---

---

6

**THANK YOU**  
**TERIMA KASIH**

---

---

---

---

---

---

---

---