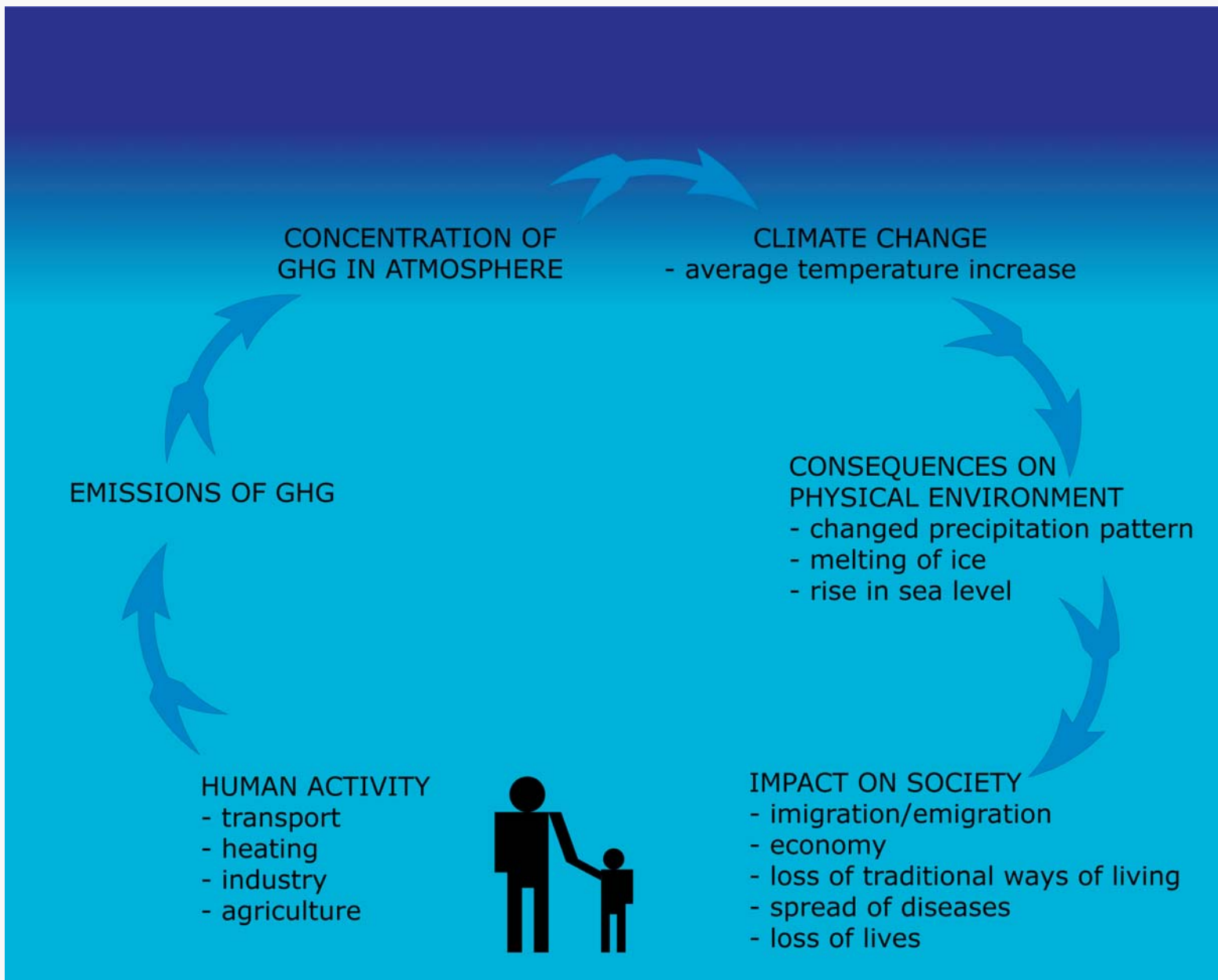


Official Statistics on GHG emissions - the Norwegian Model

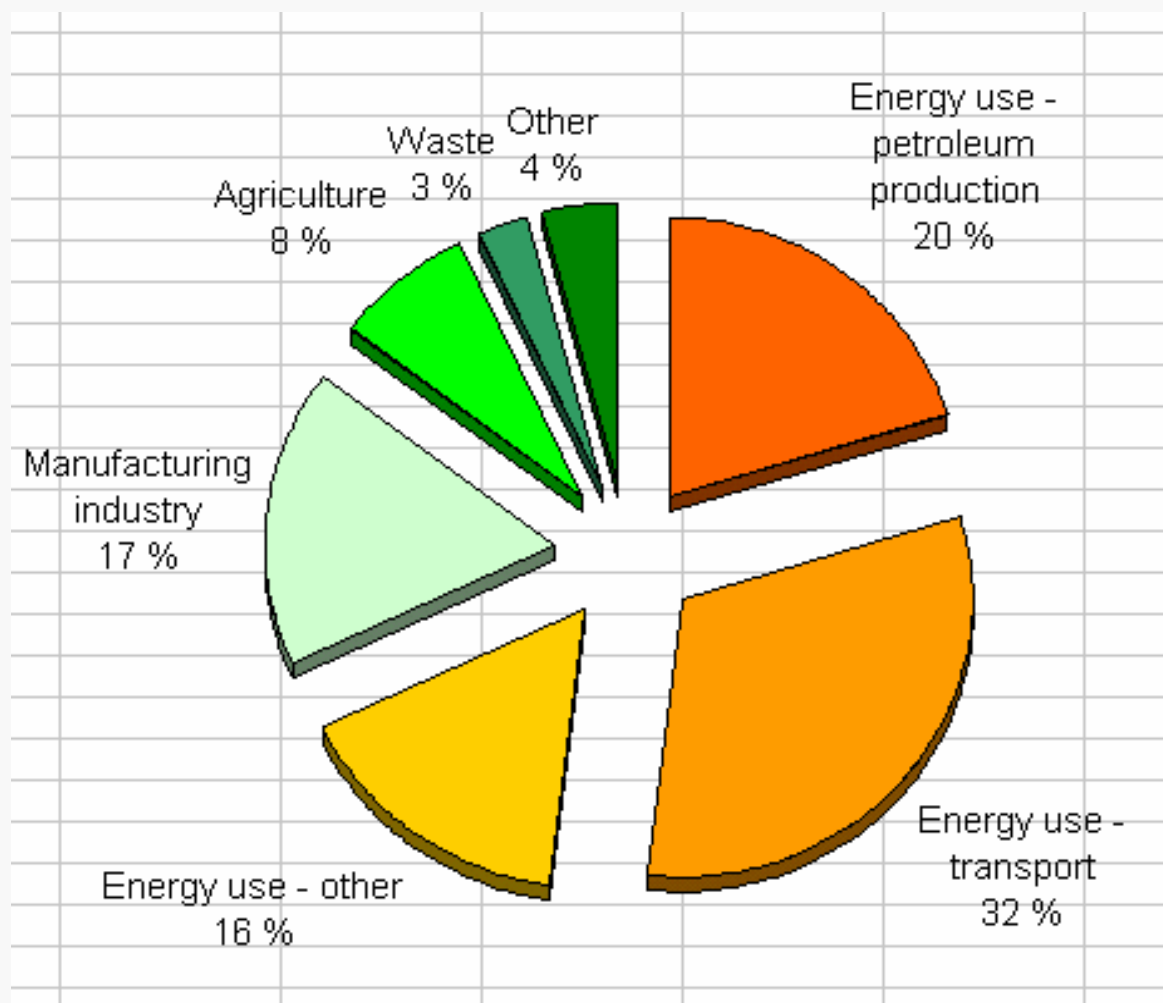
Kathrine Loe Hansen
Senior Adviser
Statistics Norway

Contents

- Climate change and the (current) role of Statistics Norway
- Norwegian official GHG emission statistics
- New challenges
- Conclusions

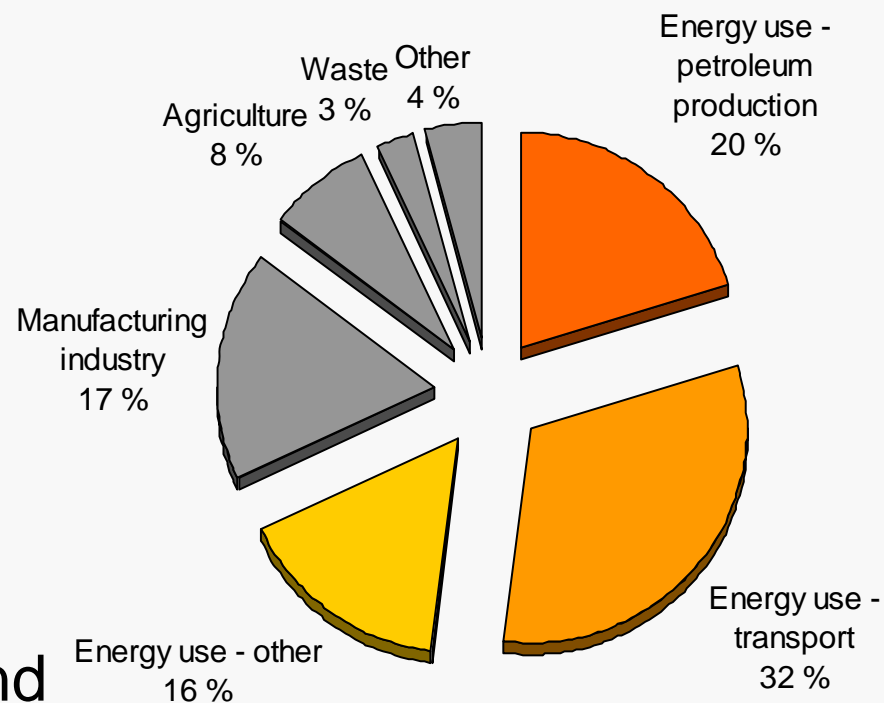


Norwegian emission profile 2006



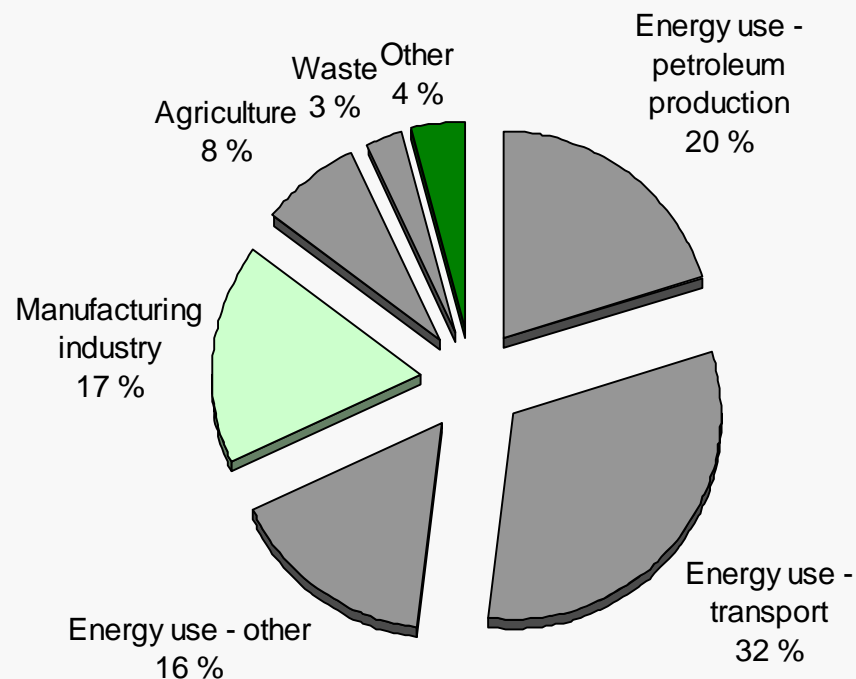
Energy production and use

- Energy and petroleum statistics
 - Energy consumption by fuel and equipment
- Transport statistics
 - Road and air transport
- Living condition surveys and consumer surveys



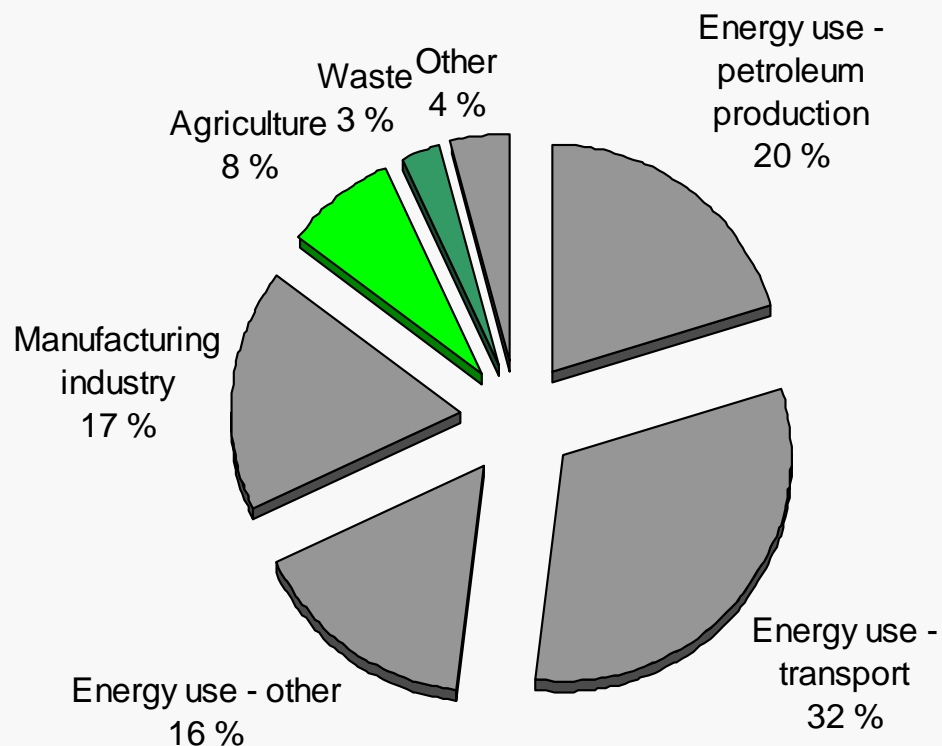
Manufacturing industry (and product use)

- Production statistics
- Foreign trade statistics
- **Reported data from industrial plants**
 - Replace estimated emissions
 - Source:
Norwegian Pollution Control Authorities



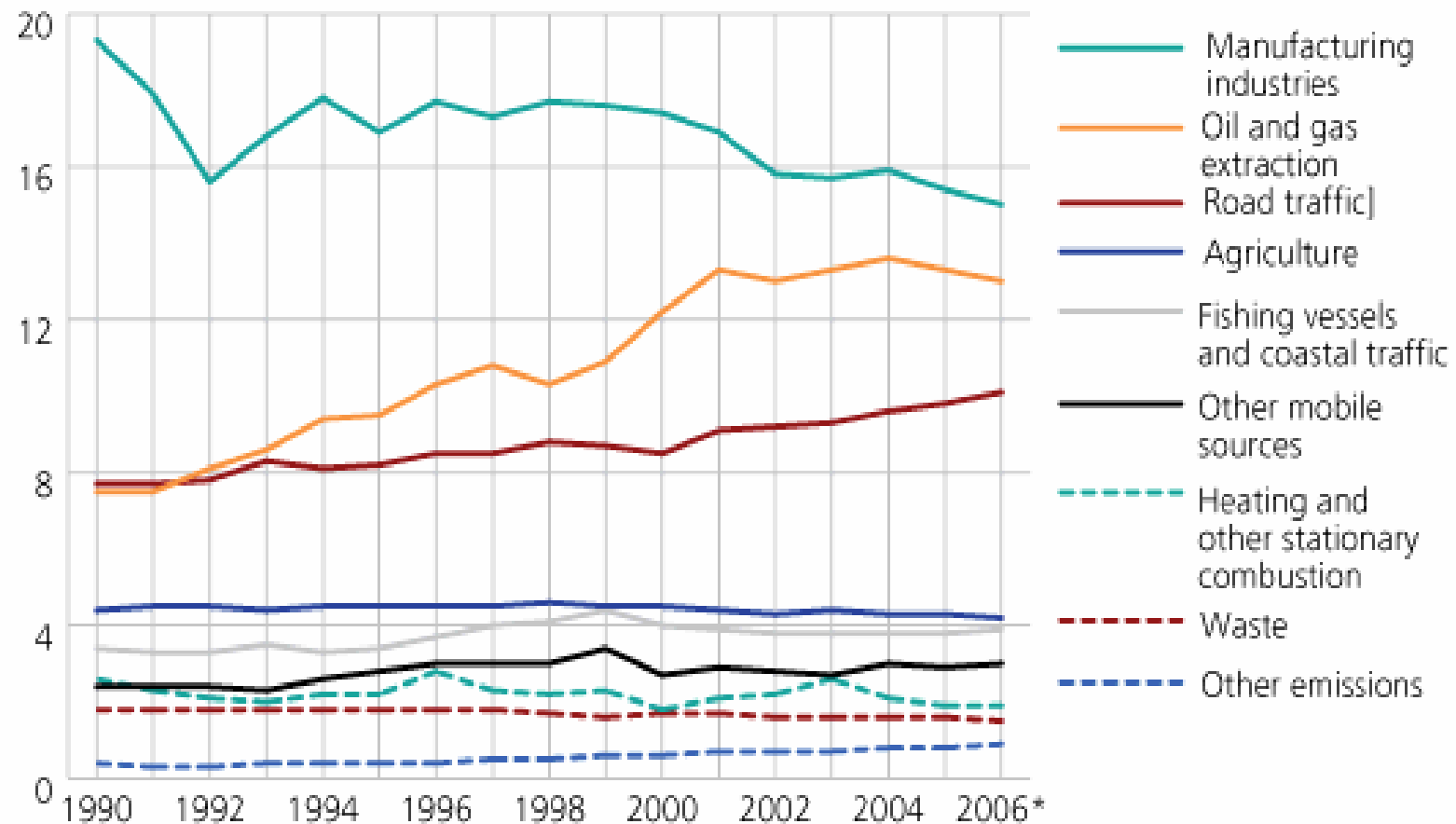
Agriculture and waste

- Agriculture statistics
 - Livestock
 - Area
- Waste water statistics
 - Fertilizer
- Waste statistics
 - Material

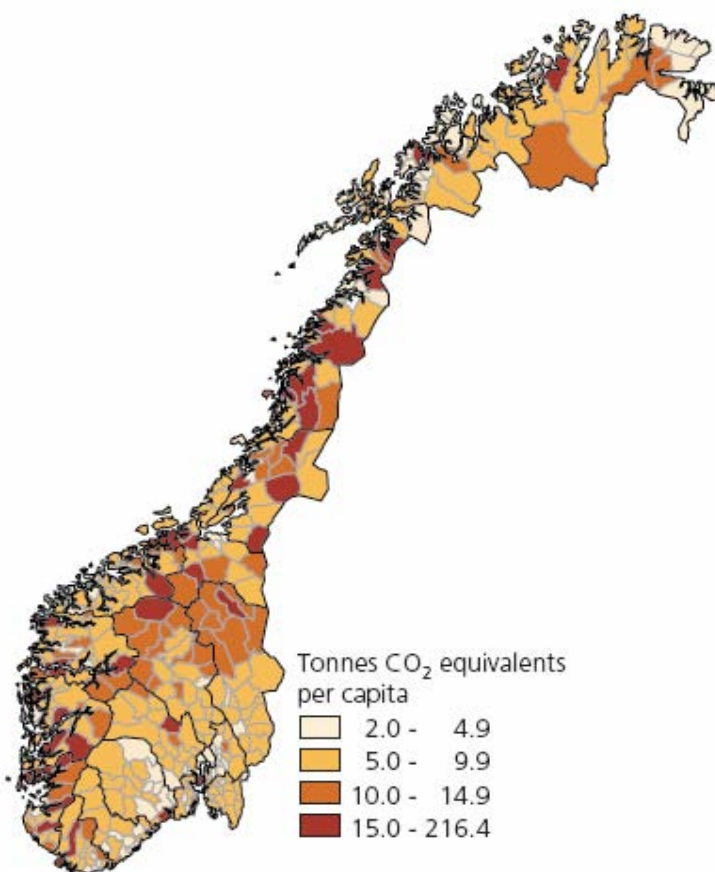


Emissions of greenhouse gases by source. 1990-2006*. Million tonnes CO₂ equivalents

Million tonnes CO₂ equivalents



Emissions by Municipality



Map data: Norwegian Mapping Authority.
Source: Emission inventory from Statistics Norway
and Norwegian Pollution Control Authority.

Reporting to UNFCCC

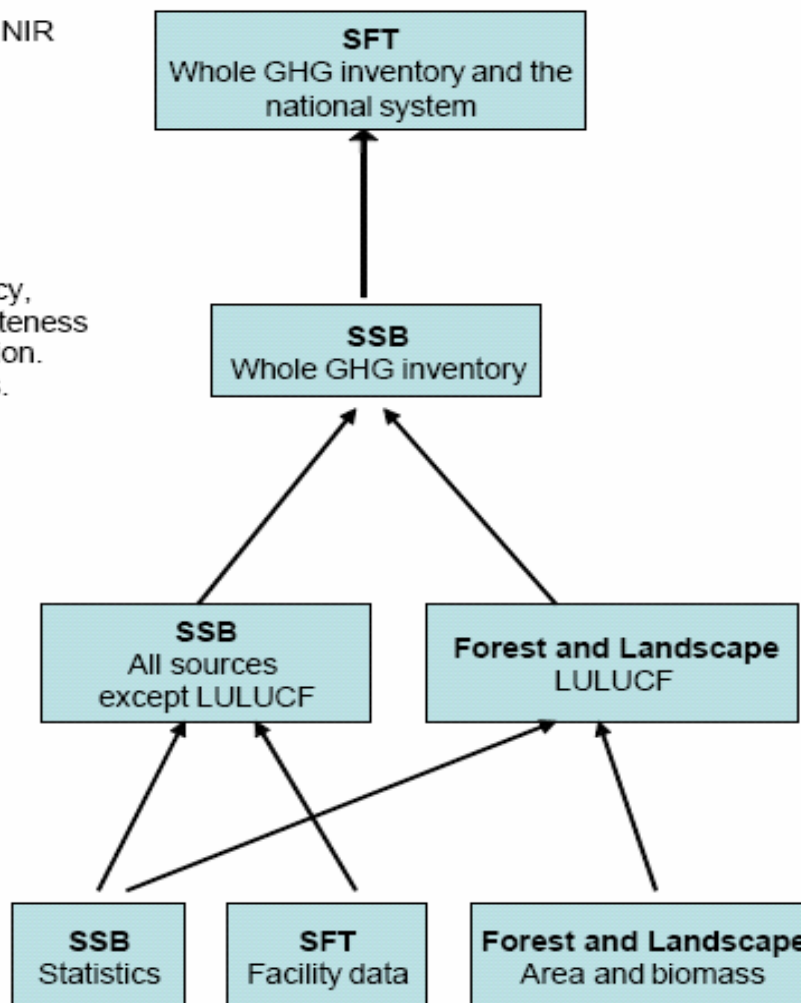
– Institutional arrangements and cooperation

Official reporting – CRF and NIR
QC of data reported in NIR
QA of the system

QA/QC of internal consistency,
double-counting and completeness
Recalculations. Documentation.
Estimation of Key categories.
Compilation of CRF tables.

Compilation of
emission/removal estimates.
QA/QC of calculations.

Data collection.
QA/QC of input data.



New challenges

- **Abatement**
 - Statistics on mitigation measures, carbon trading etc
- **Climate footprint** or indirect emissions
 - Imported food, clothing etc.
 - International air transport: Norwegian passengers
 - International sea transport: Norwegian fleet
- **Additional effects**
 - Impact of particles etc

Conclusions

- Statistics Norway in unique position: Trusted as independent and serious, providing the "correct answer" on GHG emissions
- Norwegian GHG emission estimates benefit from being Official Statistics, hence high quality *also* ensured through European Code of Practice and the UN Fundamental Principles of Official Statistics
- Great advantage for emission compilers to work in close contact with the expertise on activity data used in estimating emissions, and valuable to have easy access to other data describing the drivers and structures of society
- Future work: Find resources to meet the greatly increased demand for information and provide new statistics on for instance abatement measures

For documentation of the emission inventory, see
Aasestad, K.:

The Norwegian Emission Inventory 2007

http://www.ssb.no/emner/01/04/10/rapp_emissions/

For more emission figures, see

http://www.ssb.no/english/subjects/01/04/10/klimagassn_en/

Thank you!