

8 11

DRAFT

ACC SUB-COMMITTEE ON STATISTICAL ACTIVITIES

SA/1995/7

Twenty-ninth session

Geneva, 15, 16, 19 June 1995

Item 4 of the provisional agenda

Co-ordination of the Data Collection

with the World Bank

Report prepared by the International Economics Department of The World Bank

Co-ordination of Data Collection within the World Bank

Introduction

The following paper briefly outlines how the co-ordination of data collection is carried out within the Bank in the development of key subject areas in the Bank's database. These data are used in the compilation of statistical series presented both in Bank publications and otherwise disseminated through electronic media to the public. The paper deals with four main topic areas:

- 1) **Macroeconomic Statistics** (primarily national accounts series);
- 2) **International Trade**;
- 3) **Environmental Data**; and
- 4) **Debt Statistics**.

The "value added" in Bank statistics comes primarily from the regular inter-action of the institution's lending and operations departments with member governments and the ability of Bank missions to collect current data directly from these countries. The data are first verified and validated usually in the field, and then cross-checked for consistency and coverage at the country level. From there, a number of further adjustments may be made to the estimates to ensure greater international comparability.

1. Macroeconomic Statistics: National Accounts

The Bank is not a primary data collection agency inter-acting directly on a routine basis with member countries specifically for that purpose. But the Bank does maintain regular contact with these countries through its policy support, lending and other operational activities. The International Economics Department (IEC) where the primary

4 of 17

data functions of the Bank reside, therefore conducts semi-annual standardized internal "surveys" (referred to as the "Unified Survey") of Bank Country Economists in operations departments who collect data from the appropriate national agencies. Much of the macroeconomic analysis conducted by operational staff, however, requires only current and constant price industrial origin and expenditure data. More detailed and disaggregated national accounts information is generally not collected by operations staff and such data tends to be received on a more 'ad hoc' basis. The basic data are often supplemented by special activities and missions by IEC designed to provide a more detailed perspective and resolve apparent inconsistencies, continuity problems and other difficulties with the official estimates. These missions are carried out sometimes in conjunction with other international agencies such as the International Monetary Fund (IMF) and Asian Development Bank (ADB) which are also interested in collecting more detailed and specific series.

National accounts data go through two independent review processes--*firstly* by the Bank operations staff who view the data against discussions on macroeconomic issues with government officials in the field, and *secondly* by IEC staff as they are reported in the "surveys". During the semi-annual "surveys", data are entered into electronic files by operations staff for country analysis and these data are transferred to IEC via a LAN, where the accounts are reviewed by IEC staff. Data go through various electronic edits and validations, are checked against other series on the same topic from other sources, and then entered in the Bank's central database. If national accounts data are judged to be too poor for reliable country analysis, IEC staff lend limited technical assistance to some

countries' statistical offices at the request of the relevant Operations Department and in consultation with the countries concerned.

The national accounts in local currencies and official base years are transformed for Bank analysis and publications to a common reference point and monetary unit of account. For example, in order to analyze regional (groups of countries according to geographical location and/or income levels) performance, GDP data are converted to 1987 US dollars before aggregation and the application of least squares growth rates. Special calculations, as described in the *Atlas and World Development Indicators (WDI) Report*, are performed in order to arrive at the World Bank's annual (so-called "*Atlas*") GNP per capita numbers and International Comparisons Program (ICP) purchasing power parity (PPP) adjusted estimates of GNP per head. IEC is responsible for calculating the PPP estimates which are currently being expanded and improved with the help of Bank-financed aid support national price and expenditure surveys that adopt the "Reduced Information" approach.

National accounts data are published in time series in the *World Tables*, and in abbreviated form in the *Atlas, Trends in Developing Economies, (TIDE)*, and in the *World Development Indicators (WDI)*. A copy of an example country page containing the Bank's main macroeconomic analytical series as shown in TIDE is attached as an annex to this report.

Through its own Living Standard Measurement Surveys (LSMS), the Bank also collects unique household and community based statistics for a number of selected countries relating to production activities, expenditures and other outlays and status in life

(housing, education, health, etc.). These data are used in the compilation of income inequality and related distributional measures and in the Bank's assessment of poverty levels.

2. International Trade

Different sets of international trade data are used within the Bank for research, global modeling, policy dialogue with member countries, and publications purposes. In the case of research, although the operations complex of the Bank collects country specific trade numbers on a regular and up-to-date basis, these tend to be useful only for limited analytical purposes at the national level. The detailed data for a specific country or country group by commodities, direction of trade, and trade restrictive measures are taken mainly from the UN COMTRADE database and World Trade Organizations (WTO)

International Data Base

For global modeling, a comprehensive global data set covering each individual country's current trade values, prices and volumes, that are internationally comparable, and which utilize a blend of country level data, Bank estimates and international source, is used. The main data source is the UNCTAD trade database, supplemented by data from the UN COMTRADE, IMF, country data files maintained by Bank country operations staff and the Bank's data file on international commodity prices as well as Bank staff estimates. Bank data, though sometimes less complete and often highly specific, are more current than those obtained from other sources.

For policy dialogue with Bank member countries, country-specific and up-to-date data from national statistical agencies are used. While definitions and classification schemes may not be uniform across countries, and many series serve rather special national policy concerns (particularly in the case of major commodities in trade), the most recent data are regularly published in *Trends in Developing Economies*. (See example in annex).

For the Bank's statistical publications, including the *World Development Indicators*, internationally comparable data sets for more aggregate indicators are used. The main data sources are the same as those for global modeling except that the Bank's country operations data files and Bank staff estimates are used to give a more up-to-date perspective.

3. Environment Data

The production of World Bank data on the environment is mainly the outcome of collaboration between the Environmentally Sustainable Development (ESD) and Development Economics (DEC) Vice Presidencies. Data and Information on environmental issues are collected and/or maintained by the Environment Department (Pollution & Environmental Economics Division, and Land, Water and Natural Habitat Division); Transport, Water and Urban Development Department; Policy Research Department (Environment, Infrastructure & Agriculture Division); and the International Economics Department.

The International Economics Department maintains data files for the *Atlas* and the *World Development Indicators* (WDI) on land under cultivation, natural forests, protected

areas, water and energy use (A revision in the WDI coverage is currently underway.) At present, the data are compiled mainly from sources such as the World Resource Institute, FAO, and World Conservation Monitoring Center. IEC generally does not make any adjustment to these data because it serves mainly as a centralizing unit and clearinghouse for information compiled from different sources. However, it incorporates the adjustments made by the Environment Department, mostly on the coverage of forestry. IEC is also involved in supporting the operations complex in developing relevant approaches to integrated economic and environmental accounts satellite system, and "green accounting" leading to the derivation of an adjusted GNP measure for research analysis. It has been directly associated with the preparation of data and compilation of tables.

The Bank publishes annually, at the national level, a limited number of environmental indicators in the *World Bank Atlas* and in the *World Development Indicators* -- the statistical appendix to the *World Development Report*. A newly-launched report by the Environment Department, *Monitoring Environmental Progress* (MEP) also disseminates more environment data and information. Other country-specific or project-specific data are treated in the context of that task. These data--relating to such issues as transportation, pollution, solid waste disposal, sewage systems, etc.--are retained usually by the task's managing unit in the operational division concerned. Occasionally, some of this is drawn together, as in the case of the *World Development Report* (1993) that focused especially on questions concerning the environment.

The Environment Department of the ESD, in preparation of the *MEP*, has set up a database covering statistics on renewable water resources, land, greenhouse gases (CO₂ emission, etc.), air quality (including coal, gas and diesel emissions, as well as industrial emissions), and natural capital. It is currently developing and expanding this database as well as calculating a new concept of total "genuine savings." This concept takes into account the degradation and depletion of natural capital as well as the traditional accumulation of financial assets. The PC-Express database management system is used to support this database, which will provide the basis for future editions of the *MEP* and related series published by the Bank.

4. Debt Statistics

By international agreement, The World Bank has been designated the primary data collection agency for debt statistics and this mandate is currently performed by the Debt and Finance Unit of IEC. The requirement to report on debt is a function of the Bank's lending operations and thus reflects the legal liability of member countries to report to the Bank on their respective borrowing status and debt commitments on a regular basis. Compliance with this routine reporting requirement is closely coordinated by IEC with the operations complex which oversees the country's debt obligation. The requirements are set out in the Bank's Debtor Reporting Manual which defines the guidelines for the collection, compilation and processing of debt data. In addition, there is an agreed timetable to report. Failure by countries to report on their debt position may threaten their ability to receive further financial provision after an acknowledged grace period has been

allowed to pass. There is also the possibility that some non-reporting countries can obtain a special waiver where the further disbursement of any loan tranches or new loans might not otherwise be approved. In general, however, in cases of non-compliance with the loan reporting schedule, the approval of a loan could be withheld.

The debt reporting process enables the Bank(IEC) to keep track of debt commitment, and what is going on at the individual country level on a loan by loan basis. The data can be aggregated by region and income level. From the statistics which are used to improve debt arrangement operations, IEC provides an annual status report. In the case where non-compliance with the debtor reporting requirements is the result of technical difficulties at the country level, the Bank will mount a technical assistance exercise to help countries organize, compile, and eventually report the relevant debt data needed. Together with its own estimates, information collected through the above special technical support arrangements, and data provided regularly by the countries themselves, IEC compiles a global perspective on the official debt situation, including what is known about private, non-public guaranteed debt and short term debt issues. This is presented in an annual publication entitled "World Debt Tables". The tables in this report also include information on non-debt creating resource flows.

The "World Debt Tables" provides complete and up-to-date information on the external debt of and financial flows to developing countries. It contains consolidated statistics for all developing countries, including those that do not report to the World Bank's Debtor Reporting System (DRS)--currently of low-and middle-income countries.

Volume I of the "World Debt Tables" generally analyzes recent developments in debt and nondebt financial flows to developing countries and provides expert commentary. It summarizes statistical tables for selected regional and analytical groups. These groups comprise 137 countries that report to the World Bank's DRS. This system gives users the most detailed data on developing country debt anywhere.

Volume II provides statistical tables for the 137 countries that report public and publicly guaranteed debt under DRS, including the Former Soviet Union countries. Some indicators relate to total debt stocks, total debt flows, major economic aggregates, total external debt, long-term debt expressed in principal ratios, and any arrears accumulation. Other indicators report on debt outstanding, undisbursed debt, commitments, disbursements, principal repayments net flows, interest payments, and net transfers. Also provided are data on debt service paid vs. debt service due, average terms of new commitments, currency composition of long-term debt, debt restructuring, and scheduled debt service projections.

Trends in Developing Economies 1994

The World Bank
Washington, D.C.

13 of 14

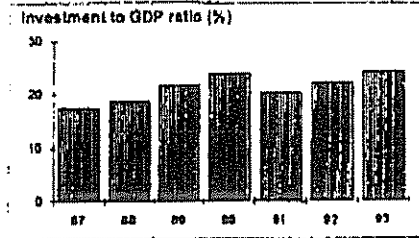
Philippines

Population mid-1992 (millions) **84.3**
 GNP per capita 1992 (US\$) **770**

Income group: Lower-middle
 Indebtedness level: Moderate

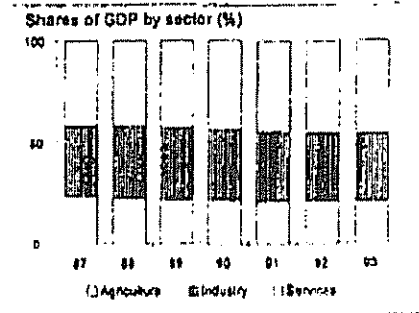
KEY RATIOS

	1980	1985	1991	1992	1993
Gross domestic investment/GDP	29.1	15.3	20.4	22.2	24.3
Exports of goods and nfs/GDP	23.6	24.0	30.0	28.9	31.6
Gross domestic savings/GDP	24.2	17.4	18.9	17.6	16.5
Gross national savings/GDP	24.9	15.2	21.4	20.8	20.9
Current account balance/GDP	-5.0	-0.1	-2.3	-1.9	-6.1
Interest payments/GDP	1.6	3.1	3.2	2.5	3.1
Total debt/GDP	53.7	86.7	71.2	61.6	66.8
Total debt/exports	212.3	331.9	218.7	185.0	186.6



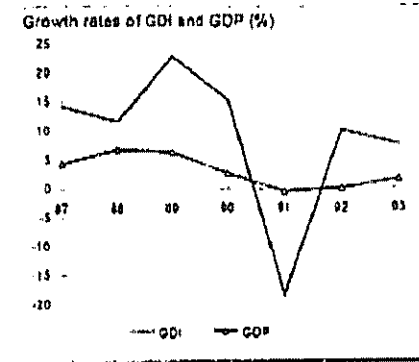
GDP: PRODUCTION

	1980	1985	1991	1992	1993
(% of GDP)					
Agriculture	25.1	24.8	21.0	21.8	21.7
Industry	38.6	35.1	34.1	32.9	32.9
Manufacturing	25.7	25.2	25.4	24.2	23.9
Services	36.1	40.4	44.8	45.3	45.4
(average annual growth)	1980-85	1985-93	1991	1992	1993
Agriculture	-0.7	2.0	1.4	-0.1	1.5
Industry	-3.6	3.1	-2.7	-0.8	1.4
Manufacturing	-3.0	3.3	-0.4	-2.1	0.7
Services	1.2	4.1	0.3	1.0	2.0
GDP	-1.1	3.2	-0.5	0.1	1.7



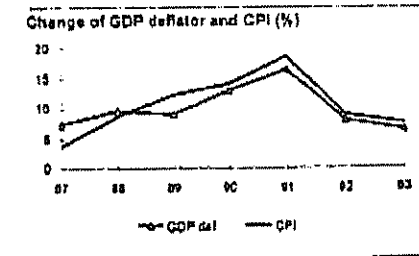
GDP: EXPENDITURE

	1980	1985	1991	1992	1993
(% of GDP)					
Private consumption	66.7	75.0	70.9	72.8	74.8
General government consumption	9.1	7.6	10.2	9.8	8.7
Gross domestic investment	29.1	15.3	20.4	22.2	24.3
Exports of goods and nfs	23.6	24.0	30.0	28.9	31.6
Imports of goods and nfs	28.5	21.9	31.5	33.5	39.4
(average annual growth)	1980-85	1985-93	1991	1992	1993
Private consumption	0.2	4.0	1.6	3.8	4.1
General government consumption	-3.0	3.2	-2.1	-0.9	-7.0
Gross domestic investment	-10.2	6.6	-18.6	10.0	7.5
Exports of goods and nfs	-1.6	7.9	5.8	3.9	9.0
Imports of goods and nfs	-8.7	13.2	-3.7	17.5	13.7
Gross national product	-1.7	4.0	0.4	1.0	2.3
Gross national income	-1.6	4.1	1.6	1.7	1.3



PRICES and GOVERNMENT FINANCE

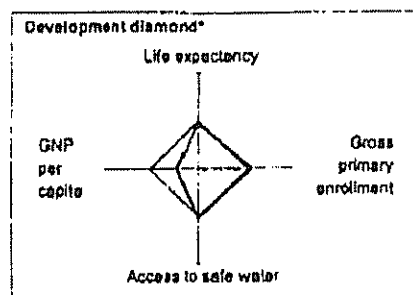
	1980	1985	1991	1992	1993
Domestic prices					
(% change)					
Consumer prices	18.2	23.1	18.7	8.8	7.6
Wholesale prices	16.3	18.2	13.4	4.5	-1.1
Implicit GDP deflator	14.3	17.8	16.5	8.0	6.6
Government finance					
(% of GDP)					
Current budget balance	4.2	2.4	2.1	2.1	2.5
Overall surplus/deficit	-1.4	-1.9	-2.1	-1.2	-1.4



Philippines

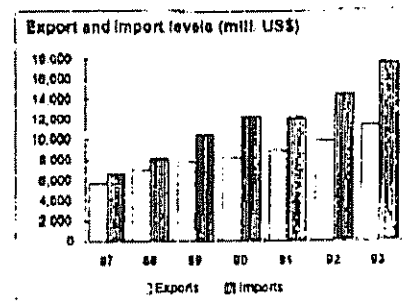
POVERTY and SOCIAL

	1980-85	1985-93
<i>(annual growth rates)</i>		
Population	2.5	2.3
Labor force	2.5	2.5
most recent estimate (mre)		
Poverty level: headcount index (% of population)		81.8
Life expectancy at birth		65.0
Infant mortality (per thousand live births)		40.3
Child malnutrition (% of children under 5)		33.5
Access to safe water (% of population)		81.0
Energy consumption per capita (kg oil equivalent)		302.1
Illiteracy (% of population age 15+)		10.3
Gross primary enrollment (% of school-age population)		110.0



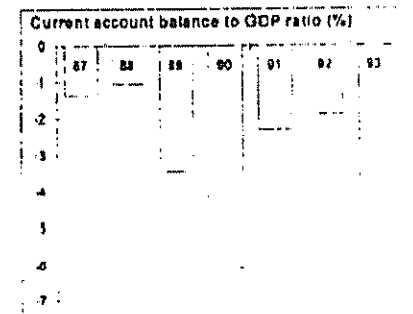
TRADE

	1980	1985	1991	1992	1993
<i>(millions US\$)</i>					
Total exports (fob)	5,788	4,629	8,839	9,824	11,375
Timber	425	199	20	19	28
Sugar	657	185	115	88	102
Manufactures	1,886	2,539	6,432	7,293	8,488
Total imports (cif)	7,727	5,111	12,052	14,519	17,597
Food	242	256	494	562	607
Fuel and energy	2,248	1,452	1,764	2,050	2,050
Capital goods	1,900	769	2,952	4,023	5,638
Export price index (1987=100)		100	112	117	115
Import price index (1987=100)		120	113	114	115
Terms of trade (1987=100)		84	99	102	100
Openness of economy (trade/GDP, %)	52	46	62	62	71



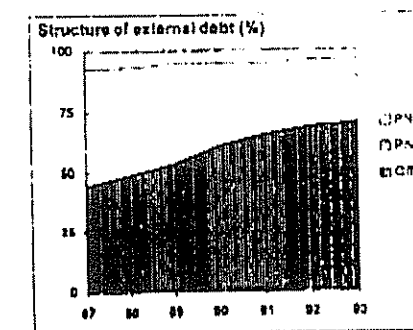
BALANCE of PAYMENTS

	1980	1985	1991	1992	1993
<i>(millions US\$)</i>					
Exports of goods and nfs	7,236	6,864	12,087	14,244	16,875
Imports of goods and nfs	9,147	5,961	13,889	16,898	20,537
Resource balance	-1,911	903	-1,812	-2,454	-4,662
Net factor income	-439	-1,317	-306	573	674
Net current transfers	447	379	883	882	888
Current account balance					
Before official transfers	-1,903	-35	-1,035	-899	-3,289
After official transfers	-1,903	-35	-1,035	-899	-3,289
Long-term capital inflow	2,348	-380	2,559	2,762	3,151
Total other items (net)	448	1,247	231	-74	-30
Changes in net reserves	-891	-832	-1,755	-1,689	168
<i>Memo:</i>					
Reserves excluding gold (mill. US\$)	2,848	615	3,246	4,403	4,678
Reserves including gold (mill. US\$)	3,978	1,098	4,436	5,336	5,934
Official exchange rate (local/US\$)	7.5	16.8	27.5	25.5	27.1



EXTERNAL DEBT

	1980	1986	1991	1992	1993
<i>Export ratios</i>					
Long-term debt/exports	107.5	203.3	177.8	153.9	157.0
IMF credit/exports	12.7	14.6	7.4	8.3	6.3
Short-term debt/exports	92.1	114.1	33.5	24.8	23.3
Total debt service/exports	28.8	31.6	23.0	27.8	19.7
<i>GDP ratios</i>					
Long-term debt/GDP	27.2	53.1	57.8	51.2	58.2
IMF credit/GDP	3.2	3.8	2.4	2.1	2.3
Short-term debt/GDP	23.3	29.8	10.9	8.3	8.3
<i>Long-term debt ratios</i>					
Private nonguaranteed/long-term	27.8	15.9	5.2	3.8	3.6
Public and publicly guaranteed					
Private creditors/long-term	42.3	41.4	29.1	27.3	25.8
Official creditors/long-term	29.9	42.7	65.7	68.8	70.8



* The development diamond shows a level of development in the country compared with its income group average