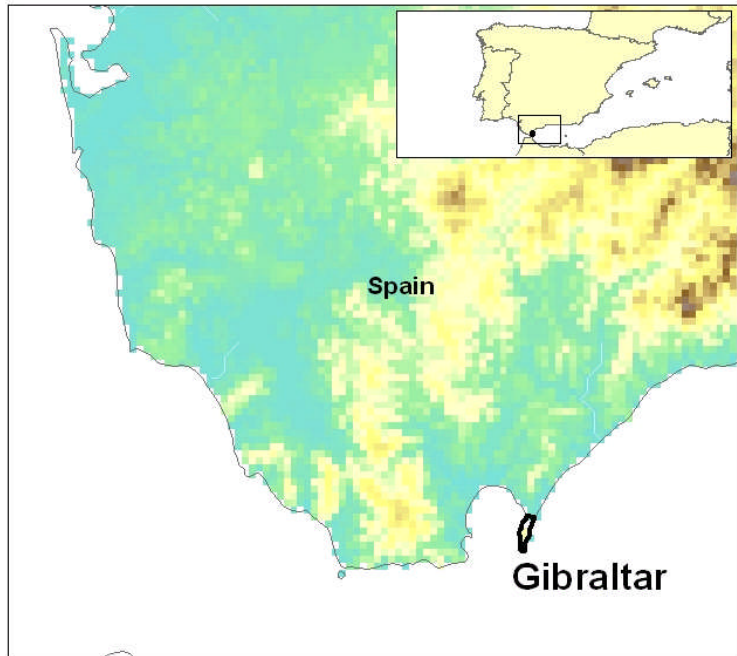


Gibraltar



Land

	Year
Total surface area (sq km):	6 2005
Agricultural land (sq km):	
Arable lands (% agri. land):	...
Permanent crops (% agri. land):	...
Permanent pasture (% agri. land):	...
Change in agricultural land area since 1990 (%):	...
Pesticide use (tonnes):	...
Fertilizer use (1000 t):	...
Forest area (sq km):	0.0 2005
Change in forest area since 1990 (%):	... 2005



Biodiversity

Percentage of surface area protected for biodiversity (%):	
Number of threatened species:	18 2006
Fish catch (tonnes):	0 2004
Change in fish catch from previous year (%):	0 2004

Energy

Energy use (1000 t oil eq.):	124 2004
Energy use (kg oil eq./capita):	4,422 2004
Energy intensity (kg oil eq) per \$1,000 GDP	... 2004
Renewable electricity production (%)	0.0 2004
Motor vehicles (1000)	...

Air and climate

Emissions of:

SO2 (1000 t):	...
SO2 (kg/capita):	...
NOx (1000 t):	...
NOx (kg/capita):	...
CO2 (million tonnes):	0.4 2003
CO2 (tonnes/capita):	13.0 2003
GHG (million tonnes CO2 eq):	...
GHG (tonnes CO2 eq) per capita:	...
Emissions of: ozone-depleting CFCs (ODP tonnes):	...

Economy

	Year
GDP (million \$US):	...
GDP growth rate from previous year (%):	...
GDP per capita (\$US):	...
% GDP agriculture:	...
% GDP mining, manufacturing:	...
% GDP other:	...

Population

Population (1000):	28	2005
Population growth rate from previous year (%):	0.2	2005

Water and sanitation

Longterm average renewable freshwater resources (million m3/yr):	...
Urban population with access to improved water source (%):	...
Rural population with access to improved water source (%):	...
Urban population with access to improved sanitation (%):	...
Rural population with access to improved sanitation (%):	...
Population served by municipal waste collection (%):	...
Municipal waste collected (1000 t):	...
Hazardous waste generated (tonnes):	...