

Environment Statistics Country Snapshot: Andorra

Andorra

Land

		Year
Total surface area (sq km):	468	2005
Agricultural land (sq km):	260	2002
Arable lands (% agri. land):	0.0	2002
Permanent crops (% agri. land):	...	
Permanent pasture (% agri. land):	...	
Change in agricultural land area since 1990 (%):	0.0	2002
Pesticide use (tonnes):	...	
Fertilizer use (1000 t):	...	
Forest area (sq km):	160.0	2005
Change in forest area since 1990 (%):	0.0	2005

Biodiversity

Percentage of surface area protected for biodiversity (%):	7.2	2005
Number of threatened species:	8	2006
Fish catch (tonnes):	0	2004
Change in fish catch from previous year (%):	0	2004

Energy

Energy use (1000 t oil eq.):	...
Energy use (kg oil eq./capita):	...
Energy intensity (kg oil eq) per \$1,000 GDP	...
Renewable electricity production (%):	...
Motor vehicles (1000)	...

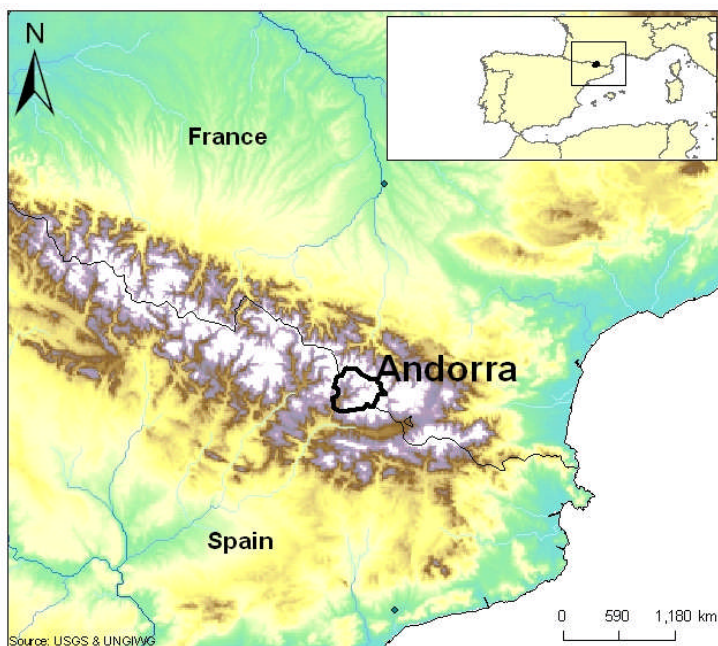
Air and climate

Emissions of:

SO2 (1000 t):	...
SO2 (kg/capita):	...
NOx (1000 t):	...
NOx (kg/capita):	...
CO2 (million tonnes):	...
CO2 (tonnes/capita):	...
GHG (million tonnes CO2 eq):	...
GHG (tonnes CO2 eq. per capita):	...

Emissions of:

ozone-depleting CFCs (ODP tonnes):	...
------------------------------------	-----



Economy

		Year
GDP (million \$US):	1,726	2004
GDP growth rate from previous year (%):	...	
GDP per capita (\$US):	25,786	2004
% GDP agriculture:	1	2004
% GDP mining, manufacturing:	6	2004
% GDP other:	93	2004

Population

Population (1000):	67	2005
Population growth rate from previous year (%):	0.4	2005

Water and sanitation

Longterm average renewable freshwater resources (million m3/yr):	...	
Urban population with access to improved water source (%):	100	2004
Rural population with access to improved water source (%):	100	2004
Urban population with access to improved sanitation (%):	100	2004
Rural population with access to improved sanitation (%):	100	2004
Population served by municipal waste collection (%):	100	2005
Municipal waste collected (1000 t):	38	2005
Hazardous waste generated (tonnes):	110	2005