

18. EXAMPLES - A) SOUTH-AFRICA

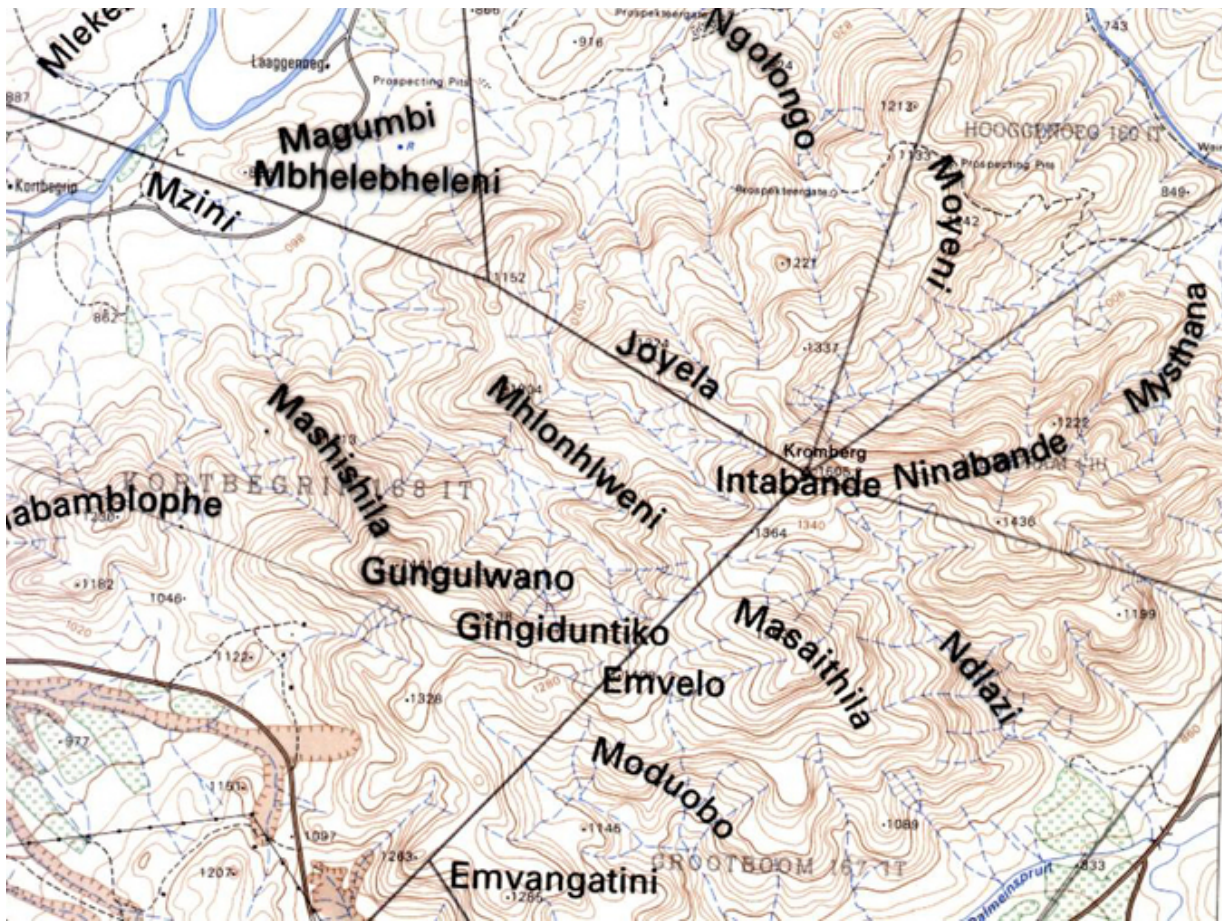
[<previous](#) - [next>](#)**South-Africa:** sheet 2630BB (Lochiel, Suid-Afrika 1:50 000, 1990)

Names of cadastral sections are in upper case.



Hill names added, collected during fieldwork of a UNGEGN toponymy course:

[Home](#)[Selfstudy](#)[Field collection systems](#)[Contents](#)[Intro](#)[1. Fieldwork instructions](#)[2. Preliminary study](#)[3. Linguistic preparation](#)[4. Geographic preparation](#)[5. Other issues](#)[6. Preliminary study](#)[7. Logistics](#)[8. Prepare mentally](#)[9. In the field](#)[10. Inventory forms](#)[11. Pitfalls](#)[12. Graphic techniques](#)[13. Representation of boundaries](#)[14. A case study](#)[15. Names model \(a/b\)](#)[16. Name forms](#)[17. Collection procedures](#)[18. Examples \(a/b\)](#)[19. Data](#)[20. Influence](#)[21. IPA](#)[22. Notation](#)



[<previous](#) - [next>](#)