

IAEG-SDGs Working Group on Geospatial Information

Working Group Update + Work Plan 2023

Mary Smyth-McCarthy, CSO, Ireland

On behalf of Kevin McCormack, CSO, Ireland

IAEG-SDGs Member and WGGI co-Chair



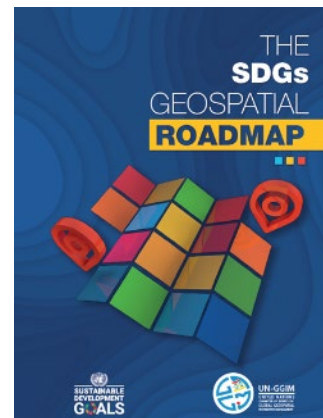
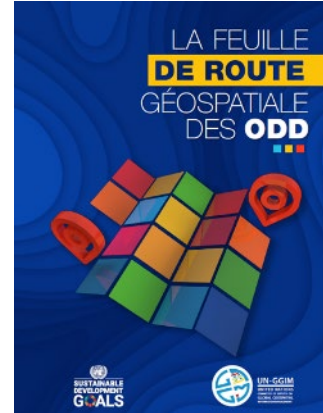
Implementing Statistical Commission Decision 53/101: Promoting the SDGs Geospatial Roadmap



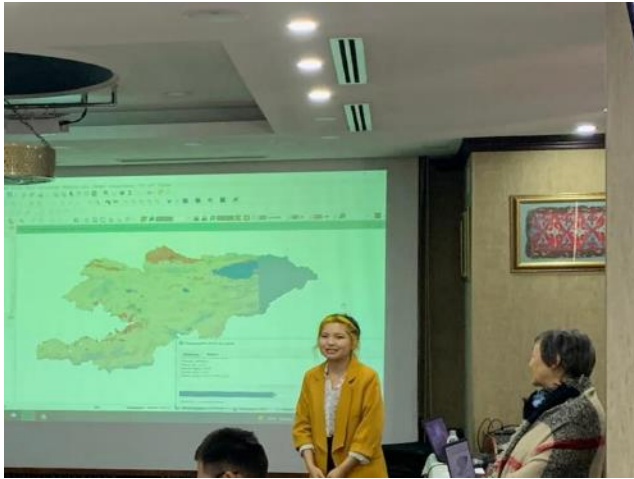
The transformational vision and new data requirements called for to realise the 2030 Agenda has only been partially realised. The extent of this challenge has been underestimated and is further amplified by geospatial data, leadership, knowledge, and innovation primarily limited to some countries, the majority being the developed countries – the geospatial digital divide.

While technologies are evolving at a rapid pace, the commensurate capabilities, skills, and opportunities in the developing countries are not, and countries are being left behind. This is a gap that must be bridged; accordingly, the SDGs Geospatial Roadmap has been developed to provide simple and actionable guidance to the IAEG-SDGs, Member States and Custodian Agencies to bridge this gap.

The SDGs Geospatial Roadmap is a living resource that helps communicate, guide and enhance the awareness of geospatial information, Earth Observations, and related data sources, tools and methods, to inform and support the implementation, measurement and monitoring of the SDGs, according to national circumstances. It achieves this through three phases that detail how and why geospatial information is needed and how it can be applied to support countries in their national implementations of the SDGs.



Implementing Statistical Commission Decision 53/101: Promoting the SDGs Geospatial Roadmap

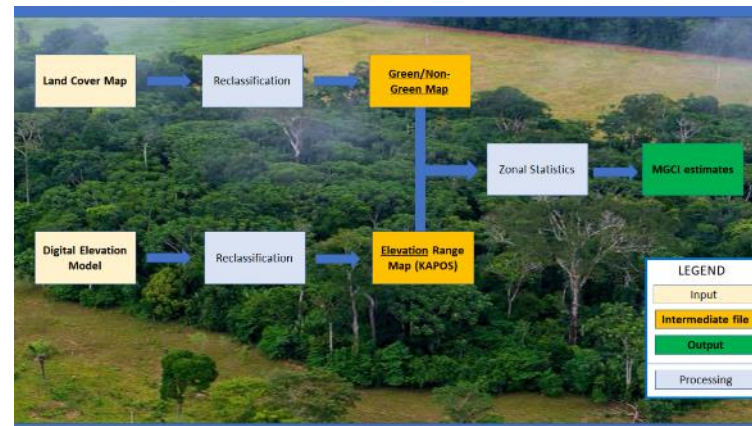


Putting the Roadmap into action in Kyrgyzstan to produce SDG 9.1.1 and 11.3.1.

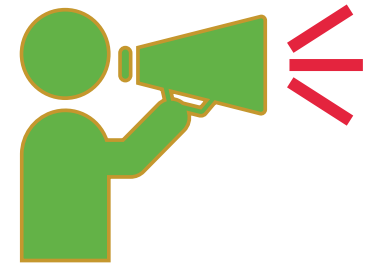


Presenting the SDGs Geospatial Roadmap at the 2022 IAOS Conference in Poland.

Supporting Burundi with implementing the SDGs Geospatial Roadmap to produce, measure and monitor SDG 15.4.2 – Mountain Green Growth Index



Side Events at the Statistical Commission and UN-GGIM



Reviewing the WGGI Work Plan 2022

#	Item
1	Promoting the SDGs Geospatial Roadmap Conduct promotion efforts among SDG Custodian Agencies and Member States of the SDGs Geospatial Roadmap
2	Support the IAEG-SDG with further guidance on Disaggregation by Geographic Location Produce a guidance note on Disaggregation by Geographic Location
3	Collating use cases of how countries have validated the outputs of Earth Observations and incorporated these outputs into their national SDG ecosystem Produce a guidance note, accompanied by national case studies, of how countries validate the outputs of earth observations in the production, measurement and monitoring of SDGs
4	Promoting the awareness and implementation of: <ul style="list-style-type: none">• The “List of Indicators”• The Assessment Matrix Develop Storymaps and other interactive tools to present and communicate the work of the WGGI
5	Communication and Outreach Collate Storymaps and other materiel from members to strengthen the communication of the potential of Geospatial Information for the SDGs.
6	Liaising with the IAEG-SDGs and responding to emergent requests Responding to emergent requests from the IAEG-SDGs

Review of the WGGI work in 2022



The Leadership of the WGGI

- Ms. Paloma Merodio, INEGI, Mexico has stepped down as co-Chair
- Ms. Sandra Moreno, DANE, Columbia has been confirmed as co-Chair by the WGGI

Item 1: Promoting the SDGs Geospatial Roadmap

- Since the 12th meeting of the IAEG-SDGs and the adoption of the SDGs Geospatial Roadmap in UNSC decision 53/101, the WGGI has worked to promote it at various events and fora:
 - IAOS Conference, Krakow, Poland - April 26-28, 2022
 - Conference of European Statisticians/UN-GGIM Europe 20 - 22 June
 - Side event at the twelfth session of UN-GGIM

Item 3: Collating use cases of how countries have validated the outputs of Earth Observations and incorporated these outputs into their national SDG ecosystem, Item 4: Promoting the awareness and implementation of the “List of Indicators”, and Item 5: SDGs Assessment Matrix and Communication and Outreach

- Examined how 10 WGGI members are using geospatial information to produce, measure, monitor, disseminate, and disaggregate geospatially enabled SDGs, through its “SDGs Assessment Matrix” – including collating numerous examples of innovative methodologies.

Proposed Work Plan 2023



#	Item	Timeline
1	Promoting the work of the IAEG-SDGs WGGI <ul style="list-style-type: none"> Convene a side event at the Statistical Commission to promote the SDGs Geospatial Roadmap and the White Paper on Disaggregation by Geographic Location Convene a virtual seminar with members of SDG Custodian Agencies and Member States to promote case studies and examples of geospatially producing SDG indicators Convene meetings with countries implementing the SDGs Geospatial Roadmap to check in on progress, identify areas of improvement, and foster the sharing of experiences and cases Participate and promote the WGGI’s work at regional and international fora 	March 2023
		May 2023
		Ongoing
		Ongoing
2	Develop a Storymap to showcase how geospatial information helps with the production, monitoring, measurement, and dissemination of geospatially enabled SDGs Consolidate the SDGs Assessment Matrix and national case studies to showcase the importance of geospatially enabling the SDGs. This would include showcasing how countries validate the outputs of Earth observations in the production, measurement, and monitoring of the SDGs	April 2023
3	Strengthening coordination and coherence of geospatially enabled SDGs Promote coordination and coherence of geospatial information with other subsidiary bodies through bilateral meetings	Ongoing
4	Liaising with the IAEG-SDGs and responding to emergent requests Responding to emergent requests from the IAEG-SDGs	Ongoing

Strengthening Coordination on geospatially enabling the SDGs.



Through coordinating work with other groups, the WGGI seeks to identify, align, and communicate their work to the IAEG-SDGs, reduce duplication and strengthen impact and coherence.

Communication and Promotion

We can communicate the outputs of relevant groups to the IAEG-SDGs, what key messages, inclusive of the SDGs Geospatial Roadmap and the progress of its implementation

Coordination

Engaging with other relevant groups – the co-Chairs have initiated discussions with the Expert Group on the Integration of Statistical and Geospatial Information and the Committee of Experts on Big Data

Capacity Development

The WGGI welcomes the work of the Secretariat in supporting Member States with implementing the SDGs Geospatial Roadmap in Burundi, Kyrgyzstan, and Rwanda. It welcomes the IAEG-SDGs to urge the Secretariat to conduct further capacity development workshops.

Disaggregation by Geographic Location

Why is this important?



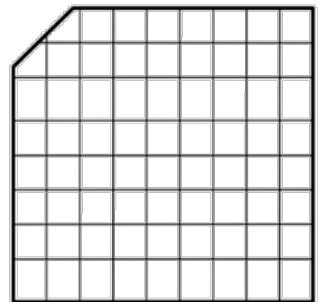
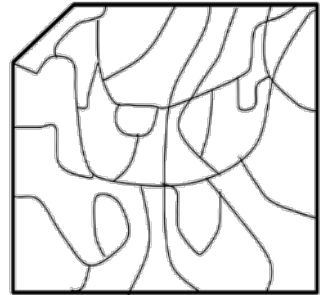
Disaggregation by geographic location helps to illuminate data implicit trends and patterns, making SDGs actionable at the local level following the UN universal principle of “leaving no one behind”.

IAEG-SDGs (2022). The SDGs Geospatial Roadmap

Disaggregation by geographic location is the breakdown of data to smaller geographic areas. These geographic areas could be Administrative (i.e.. from a national level to a local level) or could be grids, urban/rural areas or basins/sub-basins.

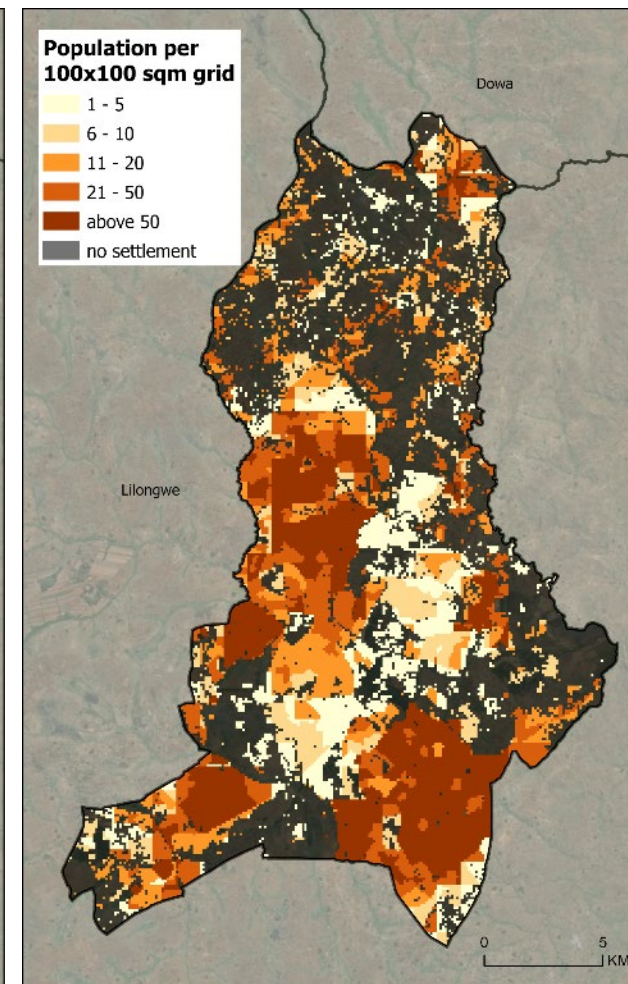
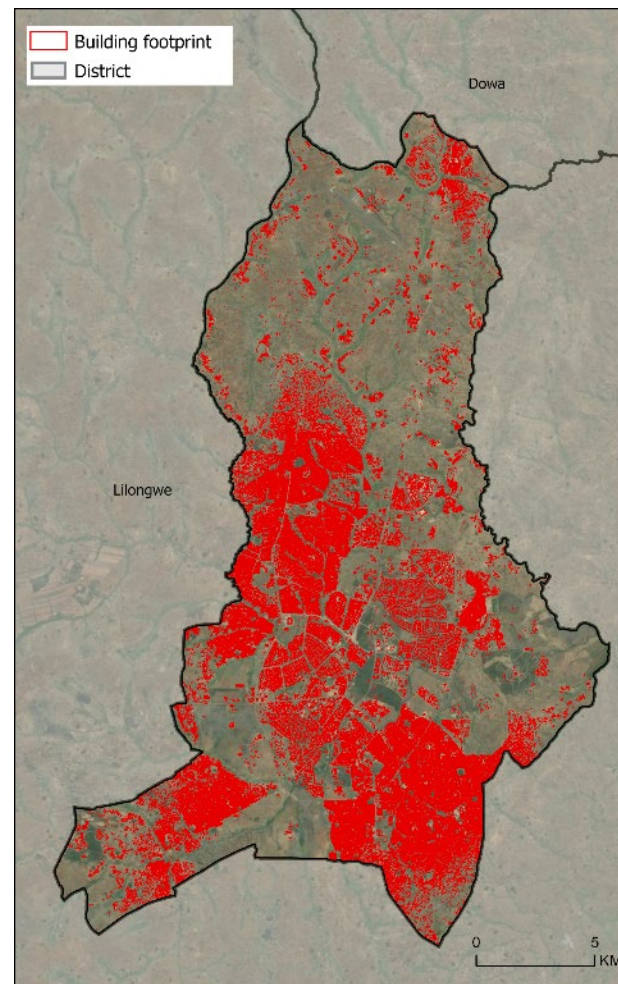
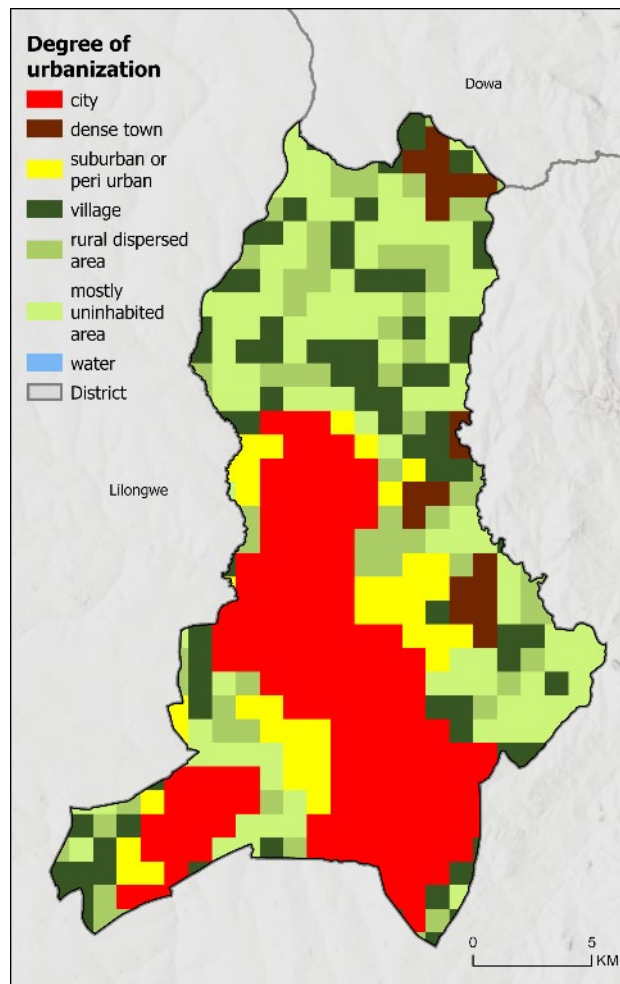
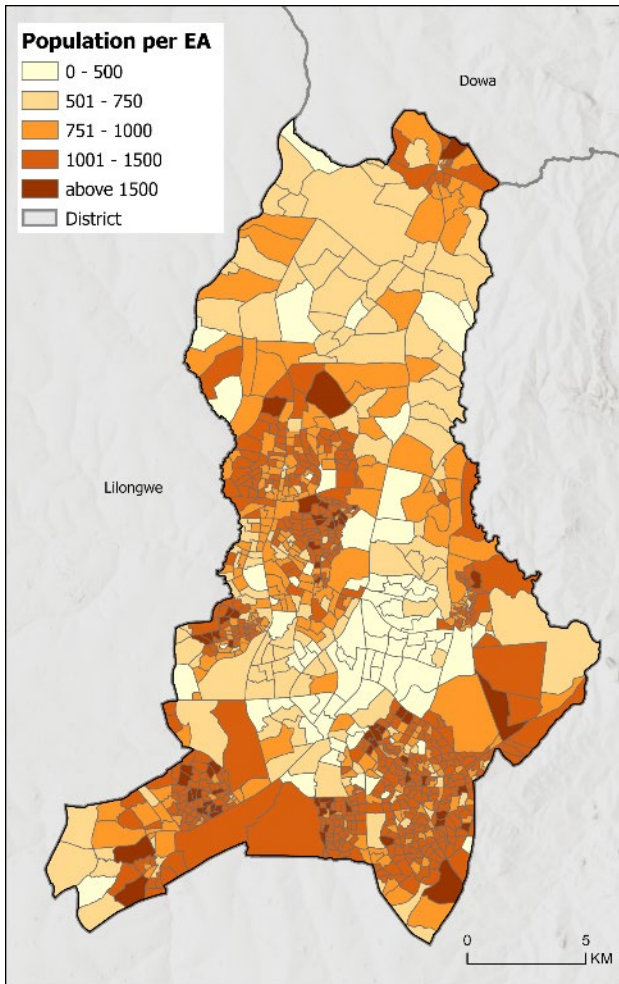
The use of disaggregation for the calculation of the SDGs provides a mechanism to achieve a greater analytical potential of the data, turning them into a high quality, accessible and timely tool for the generation of information that allows for more accurate and real-time decision making. Disaggregation by geographic location, alone or in combination with other dimensions (sex, age, income, migration, disability status), allows uncovering the existing hidden societal disparities, bringing to the fore of analysis vulnerable, precarious and marginalized segments of the population.

At the 12th Meeting of the IAEG-SDGs, the WGGI was requested to provide further guidance on Disaggregation by Geographic Location. The WGGI has developed a White Paper on Disaggregation by Geographic Location to respond to this request.



Disaggregation by Geographic Location

Integration of EA level population, building footprint, and other GIS data to estimate high-resolution population by 100mx100m grid

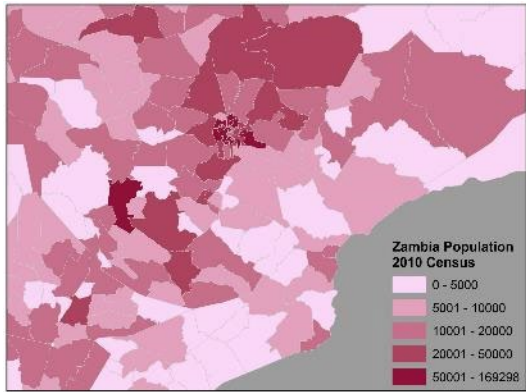


Disaggregation by Geographic Location

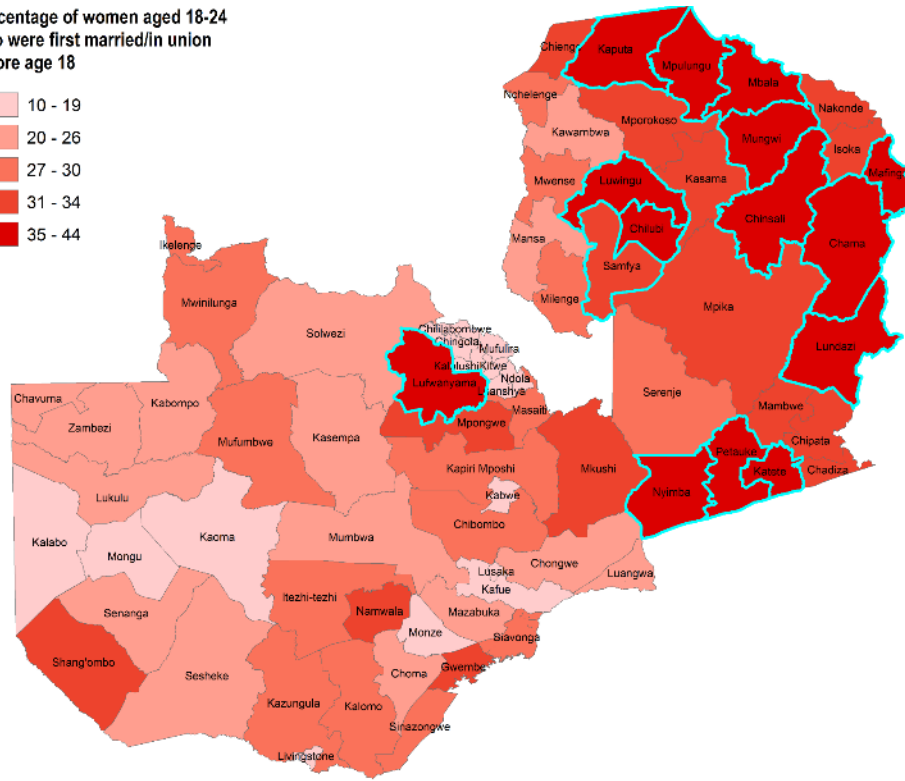
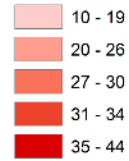
Subnational mapping of SDG indicators



Total population at Ward Level (Zambia Census 2010)

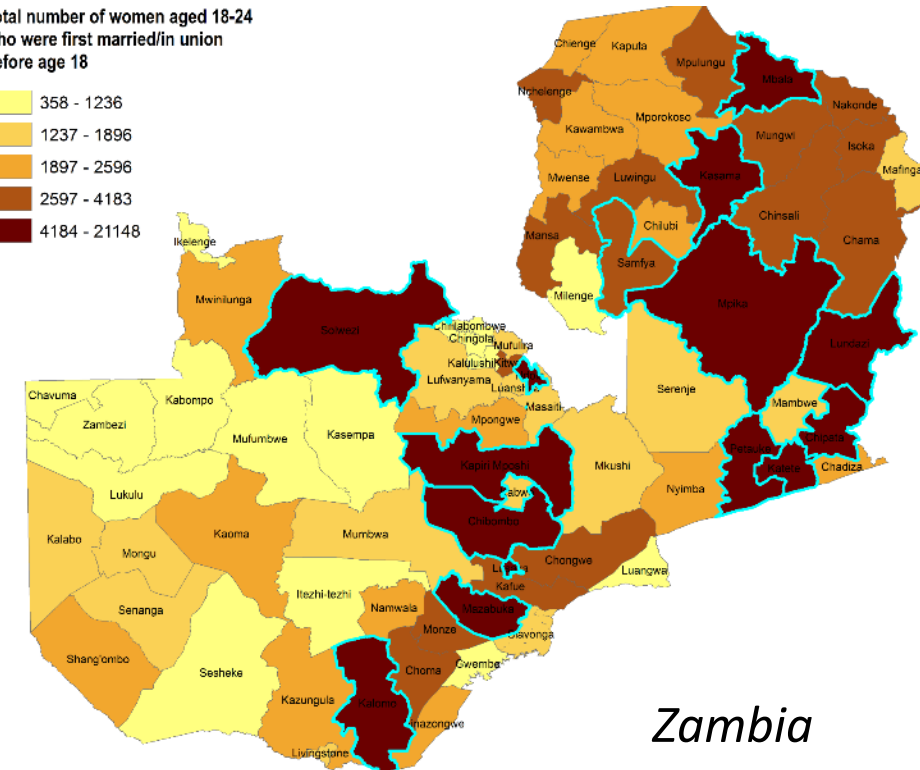
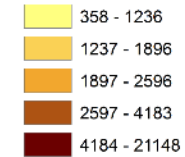


Percentage of women aged 18-24 who were first married/in union before age 18

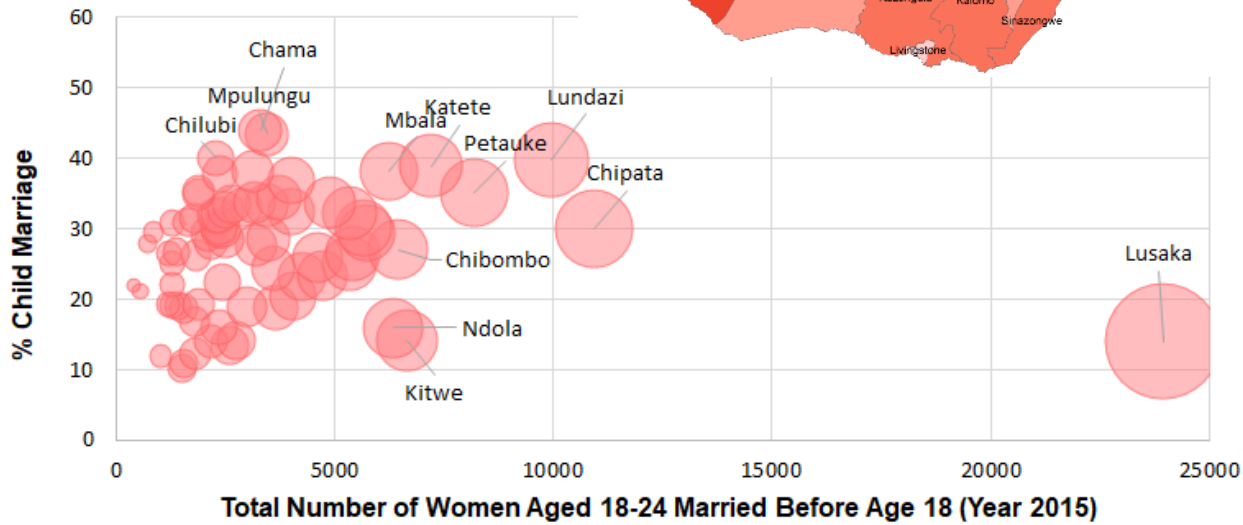


Child Marriage (Percentage)

Total number of women aged 18-24 who were first married/in union before age 18



Child Marriage (Total Number)



Zambia

Disaggregation by Geographic Location

Item 2: Support the IAEG-SDG with further guidance on Disaggregation by Geographic Location

White Paper Disaggregation by Geographic Location

Draft provided to the IAEG-SDGs. Proposal by the WGGI for the IAEG-SDGs to submit to the 54th UNSC.



Introduction



What is
disaggregation by
geographic
location, and why
is it important for
the SDGs?



What is needed
to disaggregate by
geographic
location?



What are the
limitations and
challenges using
of geographically
disaggregated
SDG data?



Producing and
using
geographically
disaggregated
SDG data

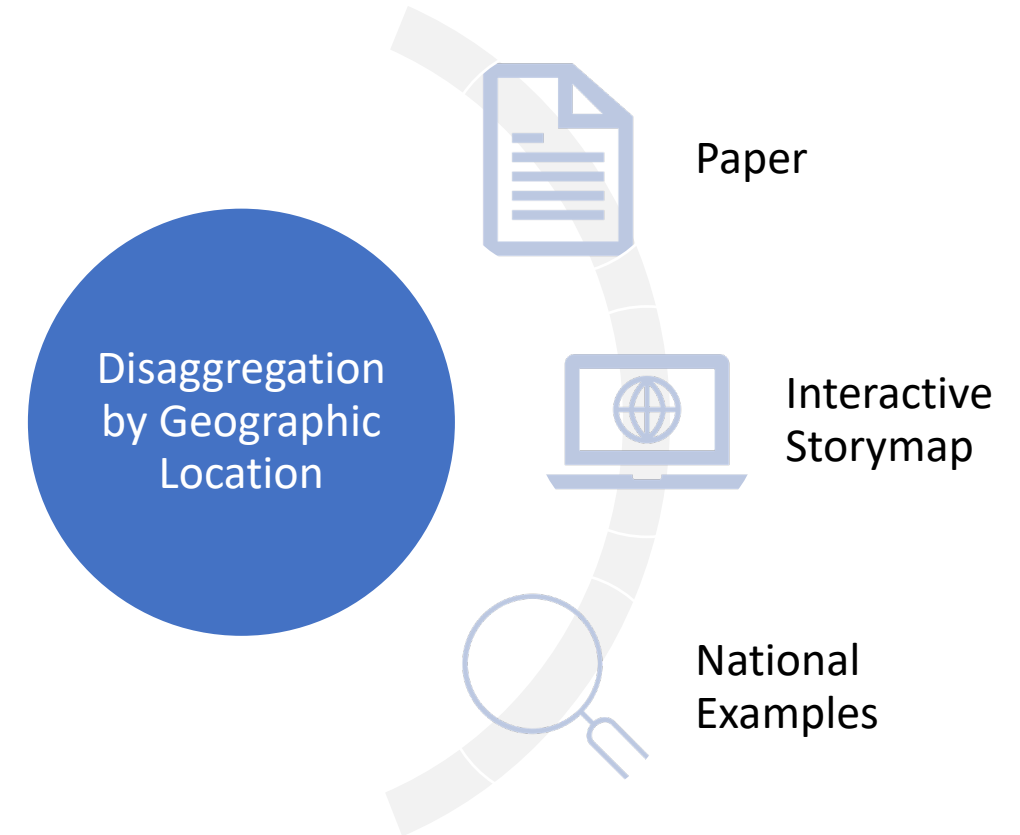


Summary



White Paper Table of Contents

<i>Introduction</i>	1
<i>What is disaggregation by geographic location and why is it important for the SDGs?</i>	2
<i>What is needed to disaggregate by geographic location?</i>	2
1. <i>Use of fundamental geospatial infrastructure and geocoding</i>	3
2. <i>Data logging of geocoded units in a data management environment</i>	3
3. <i>Common geographies for the dissemination of statistics</i>	3
4. <i>Statistical and geospatial interoperability</i>	4
5. <i>Geospatially enabled, accessible and usable statistics</i>	4
<i>What are the limitations and challenges of using geographically disaggregated SDG data?</i>	4
1. <i>Need of comparability: developing and adopting standard definitions of disaggregation dimensions and categories</i>	5
2. <i>A common spatial resolution and data format standard</i>	6
3. <i>Spatial resolution and MAUP</i>	6
4. <i>Intersectionality or multidimensional disaggregation: sample size, confidentiality and reliability</i>	7
5. <i>Indirect estimation of disaggregated SDG indicators based on the integration of survey data] with additional data sources</i>	7
6. <i>Data disaggregation through administrative records</i>	8
<i>Producing and using geographically disaggregated SDG data</i>	9
<i>Producing and using geographically disaggregated SDG data</i>	9
<i>Summary</i>	10
<i>National Examples</i>	10



IAEG-SDGs Working Group on Geospatial Information

Thank you

